



September 27, 2024

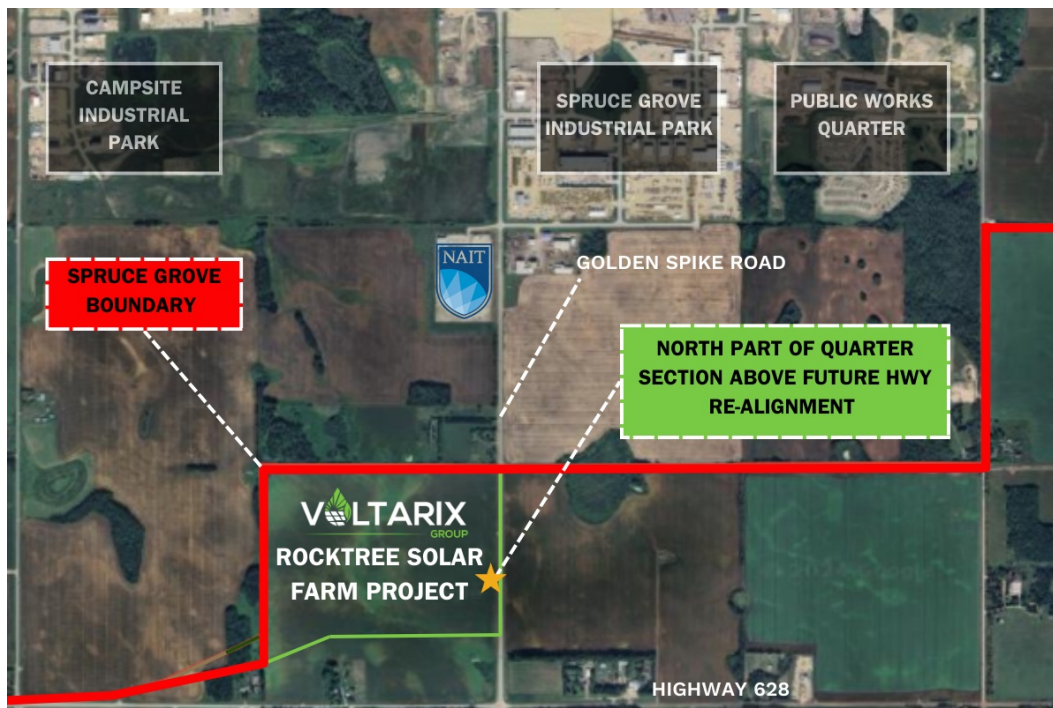
The City of Spruce Grove
ECONOMIC & BUSINESS DEVELOPMENT NEWS
Keeping you informed!

Our [Economic & Business Development](#) newsletter keeps you informed about new development, business, and interesting happenings in the business community.

Stay in the 'know' - Sign-up below!

❑ **FEATURED DEVELOPMENT** ❑

An Update on the Voltarix Rocktree Solar Farm



[Voltarix Group Inc.](#) is proceeding with its Rocktree solar farm project, which will be a 25 megawatt direct current solar power project that will cover 120 acres. It will be located on a greenfield site near the intersection of Golden Spike Road and Highway 628, which is in Parkland County and located on Spruce Grove's southern boundary.

The Rocktree project will include over 41,000 solar modules installed on steel foundations. The site will require no civil grading and will have large spaces between modules for future agrivoltaics integration (dual-use solar, allowing agricultural production under or adjacent to solar panels). Voltarix will transmit energy to FortisAlberta's existing distribution power lines that supply energy to much of Spruce Grove's southern areas of the city.

Rocktree will provide significant renewable energy for the local grid. It will generate about 31,000 megawatt (MW) hours annually, which is enough to power around 4,500 homes, supporting Alberta's goal of 30% renewable energy by 2030.

This project is set to begin construction in spring 2025, with a timeline of 10-12 months from start to finish. To support these projects, approximately 120 workers will be needed, with a focus on local hiring.

"Solar energy in Alberta promises to lower electricity costs to end consumers and drive industry growth. We chose a site in proximity to Spruce Grove because this site is strategically the best fit for us due to its flat terrain, proximity to a substation, and great access to local labour forces." - David DeBruin, Director & President

□ SUPPORT LOCAL □

Welcome, new businesses!



[Maetche Construction](#) at 60 Shep Street is a manufacturer of backyard storage sheds, cabins, and garages. They offer exceptional customer service, innovation, superior craftsmanship, and top quality products. □



[Dr. Phone Fix](#) at #414, 11 Westwind Drive offers laptop and mobile phone repairs. They provide quick, dependable, and reasonably priced fixes to guarantee that your gadgets are constantly in excellent running condition. □

Thank you to our existing businesses!



[Spruce Grove Denture Clinic](#) at #205, 70 McLeod Avenue in Westland Market Mall offers full dentures, partial dentures, surgical dentures, implant retained dentures, and other treatment services to clients of all ages. □



[Bowline Logistics](#) relocated to 384 Saskatchewan Avenue and is a transportation and freight company that offers a highly scalable set of services that will get your freight to its destination quickly and safely. □

□ CITY-OWNED INDUSTRIAL LAND FOR SALE □

Only 2 lots remaining in the City-owned 18-acre [South Century Industrial Park](#). These are fully-serviced industrial lots are located at Century Close (just east of the Public Works site).

This industrial park is ready for your business. [Contact us](#) for more information. Realtor protected.



□ OTHER NEWS □



City Hall	780-962-2611
Parkland RCMP (general enquiries)	825-220-2000
Enforcement Services (general enquiries)	780-962-7586
Fire/CMS (administration)	780-962-4895
Community Social Development (FCS)	780-962-7618
Economic & Business Development	780-962-7608
Planning & Development	780-962-7582
Public Works	780-962-7584
City Centre Business Association	780-571-4770
Eco Centre	780-962-7584
Spruce Grove Transit	780-962-7632
Accessible Transportation Services	780-962-5444
Spruce Grove Public Library	780-962-4423
Horizon Stage Performing Arts Centre	780-962-8995
Facility Rentals	780-962-7579
TransAlta Tri Leisure Centre	780-960-5080
Border Paving Athletic Centre	780-962-7632
Spruce Grove Arena	780-962-2031
Visitor Information Centre	780-963-4545



info@sprucegrove.org



[Spruce Grove's 2024 City Maps](#) are now available! Printed copies can be picked up at City Hall at 315 Jespersen Avenue, the Spruce Grove Public Library, and the Greater Parkland Regional Chamber of Commerce's Visitor Information Centre.

The City of Spruce Grove's [Economic Development department](#) is temporarily relocating their offices to the Public Works building at 21 Century Close. This is to accommodate renovations on the second and third floor of City Hall.

The City Centre Business Association is looking to hire an Executive Assistant!

**WE ARE
HIRING!**

EXECUTIVE ASSISTANT

- Flexible Part Time Position (15 hours/week)
- Responsibilities of the job include supporting the Board of Directors, administrative duties, event planning, and more!

SPRUCE GROVE
City Centre
BUSINESS
ASSOCIATION

They are seeking a dedicated professional to support the revitalization of Spruce Grove's City Centre. If you are passionate about community development and have strong administrative skills, send your resume and cover letter to info@sprucegrovecitycentre.org.

PROGRAMS



Open to building owners and business owners in the City Centre - Applications for the [Spruce Grove City Centre Storefront Improvement Program](#) are open for projects in 2024 and 2025. This program supports improvements to storefronts and accessibility. The City will provide a 50% matching grant up to \$7,500 per storefront or \$10,000 for a street corner where improvements are made to two facades.



The Government of Canada's [Canada Small Business Financing Program](#) aims to increase the availability of financing to establish, expand, and modernize Canadian small businesses by offering up to \$1,000,000 Term Load (of which \$500,000 for equipment, leasehold improvements, intangible assets and working capital, of which \$150,000 for intangible and working capital) to small businesses in Canada.

EVENTS

Upcoming



The Greater Parkland Regional Chamber of Commerce is hosting their [2024 Business Awards of Distinction Gala](#) on



Spruce Grove's Community Development department is hosting a [Don't Just Survive, Thrive](#) workshop on November

October 16 at the Heritage Pavillion in Stony Plain to celebrate the entrepreneurs, businesses, charities, and not-for-profits that shape our region.

2 at Supreme Steel in Acheson to feature sessions on building sustainability, volunteer management, leadership, and organizational capacity for non-profits.

Re-caps



Congratulations to [NAIT](#) on their recent funding announcement, which will enable the acquisition of new equipment for their apprenticeship programs, including a 70-metric-ton crane for the Spruce Grove Campus!

SIGN UP FOR OUR NEWSLETTER!

To learn more about economic and business development in Spruce Grove, visit [InvestSpruceGrove.ca](#). If you have any questions, email us at Invest@SpruceGrove.org.

Thank you for your engagement.

From our team to yours,
Dave, Karla, Jodi, & Anika

Follow us on social media:



City of Spruce Grove Economic & Business Development | 3rd Floor, 315 Jespersen Avenue | Spruce Grove, AB T7X 3E8 CA

[Unsubscribe](#) | [Update Profile](#) | [Constant Contact Data Notice](#)



Try email marketing for free today!