

HERE WE GROW



Life & leisure in Spruce Grove

COMMUNITY

sprucegrove.org

SPRUCE GROVE

...on the grow and on the go!

Our population has grown an average of 5% annually for the past 10 years – and 8% in 2015 – making Spruce Grove one of Alberta's fastest-growing communities. And it is showing its popularity with families new to our community.

Our thriving city is experiencing unprecedented growth – and no wonder!

We offer quality, affordable housing options, top-notch recreation programming as well as sport and cultural amenities and all the services a family needs to enjoy life to the fullest – including shopping, personal care and health services, schools and entertainment.

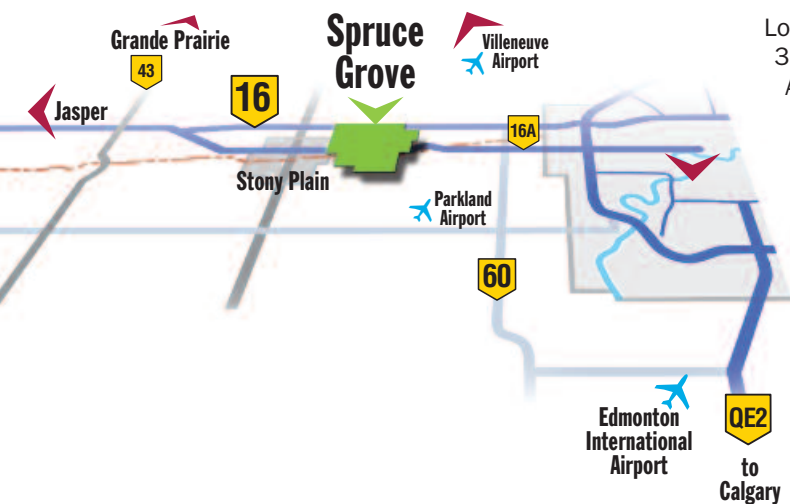
A robust – and growing – business and industrial sector ensures Spruce Grove is a great place to live and work. Boutique retailers and popular national stores, as well as an extensive professional services sector, attract business from throughout the region.

We are proud of our connections with a 79,000-strong tri-municipal area that includes the nearby municipalities of Stony Plain and Parkland County.

Located just 11 kilometres west of Edmonton, our city of over 32,000 holds a key position within Alberta's Capital Region. As the western gateway, Spruce Grove is the first major city for travellers from the west or northwest. We enjoy easy connections to major highways and we're a short 30-minute drive from the Edmonton International Airport.

Edmonton's ring road, Anthony Henday Drive, means fast and convenient travel throughout the Alberta Capital Region – for easy access to jobs, services and amenities in place for this region of over 1.2 million people.

Guided by the City's vision of environmental stewardship, Spruce Grove takes pride in developing a sustainable future that balances a vibrant economy, a welcoming community and a rich quality of life.



We're family friendly ...and we're active

Spruce Grove is one of the 10 best places in Canada to raise your children – and one of the top 100 best places to live in Canada – according to a 2015 survey by *MoneySense* magazine.

And our active community offers great options for the entire family. Choose from sport and recreation programs to community programs that enrich the lives of everyone from children to seniors.

Tri Leisure Village... the centre of the action

Spruce Grove's newest commercial and recreation development is a hit with residents and visitors.

With the new Border Paving Athletic Centre, the Holiday Inn Express & Suites, six new retail and commercial enterprises, two full-service restaurants and a new medical and professional building, the Tri Leisure Village brings new energy and opportunity to Spruce Grove.

Border Paving Athletic Centre – This centre anchors the Tri Leisure Village. This 30,000-square-foot facility is the new home of the Aerials Gymnastics Club and the administrative centre for recreation and sports groups and the City's Recreation Services staff.

TransAlta Tri Leisure Centre – Amenities at this multi-use community sport, recreation and wellness facility include a full-sized aquatic complex with a leisure pool and waterslide, fitness centre, two NHL-sized arenas, leisure ice, indoor soccer fields, a gymnasium, a children's play area, meeting rooms and free Wi-Fi.

Fuhr Sports Park – This premier outdoor sports facility hosts many regional and national tournaments, and is venue of choice for Edmonton Eskimo events outside Edmonton. It is the only facility in the Edmonton region to boast twin artificial fields.

Rotary Playscape – Adjacent to Fuhr Sports Park, this all-weather, interactive play facility is designed by kids for kids.

Spruce Grove — naturally, we're active!

Spruce Grove offers a wide range of sport and recreation programs from hockey to hot yoga, gymnastics to girl guides. Try your hand at archery or martial arts. You'll also find personal trainers, children's programs, AquaFit classes, seniors' programs and more.

For something different, check out disc golf at Jubilee Park or play pickleball at Henry Singer Ball Park.



TRANSALTA TRI LEISURE CENTRE



Golf, anyone?

The Links golf course is one of Alberta's premier courses with its challenging public 18-hole championship course. In winter, enjoy the cross country ski trails at The Links.

The Agrena Ice Centre

The Agrena's full-sized Grant Fuhr & Stu Barnes arenas are home to local minor sports associations, the Alberta Junior Hockey League's Spruce Grove Saints and the Spruce Grove Curling Club.



Spruce Grove



neighbourhoods



Housing options support your lifestyle

Take your pick. You may want a large, single-family home or a high-rise condo. A modern brownstone may catch your eye. Perhaps a convenient townhome suits your family's needs.

You can choose an established neighbourhood with its mature landscaping or one of the several exciting new neighbourhoods featuring the latest 21st century design – and with nearby amenities and services your family will appreciate.

Whichever option you choose, you'll find your new home affordable, safe and part of a very welcoming community.



Nature at your doorstep

We are proud of our community. Modern urban design and a commitment to our environment ensure the preservation of our magnificent natural spaces for generations to come.

With a multitude of parks, including a fully fenced off-leash dog park, create your own special family moments walking, biking, picnicking, skating, tobogganing or cross-country skiing. Park spaces are designed for year-round use with amenities to suit every season.

We're green!

Spruce Grove is designed for sustainability. Walkable neighbourhoods encourage residents to enjoy nature while mixed-use trails connect every part of our city.

The Mayor's Task Force on the Environment and the resulting 10-year action plan give our residents a high quality of life with opportunities to enjoy nature, protect our environment and build a rich sense of community with friends, family and neighbours.



DID YOU KNOW?

FIFTY KILOMETRES OF TRAILS LINK A NETWORK OF GREEN SPACES. SPRUCE GROVE FEATURES OVER 800 ACRES OF GREEN SPACE INCLUDING THE NEW JUBILEE PARK.

Excellent school options

Excellent quality public, separate (Catholic) and private schools as well as French immersion programs in Spruce Grove offer options to suit your family. A new K-9 school, the Prescott Learning Centre, is scheduled for completion in 2016-17.

Post-secondary students can choose from major institutions in Edmonton including the Northern Alberta Institute of Technology (NAIT), the University of Alberta and MacEwan University.

Shopping and entertainment — everything you need!

Boutique retail outlets complement major national stores including The Home Depot, Walmart Supercentre, Canadian Tire, PetSmart, Michaels, Winners and the Real Canadian Superstore.

When it's time to relax, the city offers fine dining, family restaurants and several night life spots. Enjoy live entertainment, a movie or play a game at our local billiards club.



Public transit — the environmentally friendly option

Public transit service enhancements and planned service growth within the tri-region and into Edmonton will give residents convenient, economical and environmentally friendly ways to commute into Edmonton throughout the day or evening and on weekends. The service changes will be introduced over the next five years.

Specialized Transit Service (STS) is available to all seniors (aged 55+) and individuals with mobility challenges living in Spruce Grove.

New NAIT campus coming to Spruce Grove

Spruce Grove will welcome specialized construction trades students starting in September 2016 when a crane and hoisting program, the first stage of the new NAIT campus, is scheduled to open. The program will be housed on 15 acres in the Spruce Grove industrial area south of Highway 16A.

a family city

Learn, grow — and enjoy

Spruce Grove Public Library

Housed in the Melcor Cultural Centre, the public library offers hard copy and electronic materials for children and adults — as well as a variety of programs and events. Free high-speed Internet connection and word processing productivity suites ensure you stay connected.

The library's Innovation Lab ignites the imagination. From 3D printing to a virtual trip anywhere you want to go, you can do it here! Create your #1 hit song or invent the latest gadget. Futuristic — and retro. Tap away on a typewriter.



Spruce Grove Grain Elevator Museum and Farmers' Market

The iconic grain elevator museum and the Spruce Grove Archives, on the museum grounds, entice visitors to explore our proud past from May through September.

Year-round, visitors enjoy a range of family events.

The farmers' market, also on the museum grounds, attracts residents from April through December.

Arts and culture ...discover the delights

From festivals to fine arts, Spruce Grove delivers the activities families want in their community.

Spruce Grove's many annual events are the perfect way to meet old friends and make new ones.

Canada Day Celebration – Spruce Grove makes Canada Day rock! This highlight event attracts about 13,000 friends and neighbours annually.

Christmas in Central Park – Make this a family tradition! Spend the afternoon skating, taking a wagon ride, making crafts, playing games and enjoying treats, then marvel at the breathtaking finale when Central Park lights up for the season.

Grove Cruise Classic Car Festival –

Car lovers and families look forward to this annual three-day summer festival, part of our community since 2003. Typical activities include a vintage car parade, a Show and Shine car display featuring hundreds of vehicles, a tailgate swap meet, poker run and more.



Up close & personal

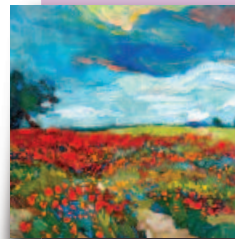
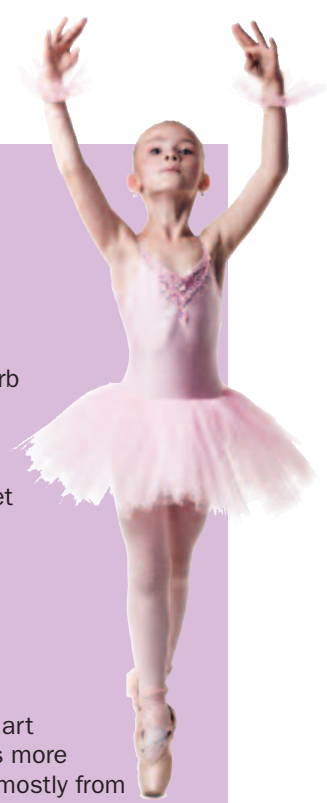
Horizon Stage Performing Arts Centre

This intimate and acoustically superb venue offers a varied season of theatre, music, dance, family performances and theatre classes. Delights from jazz to folk, from ballet to comedy await.

Spruce Grove Art Gallery

The Spruce Grove art collection features more than 170 pieces, mostly from Alberta artists. The gallery also hosts up to 10 feature-artist exhibitions annually as well as offering visual arts programming.

The art gallery and gift store, located in the Melcor Cultural Centre, are operated by the Allied Arts Council of Spruce Grove, a not-for-profit charitable organization. Annually, the Council hosts an open art competition, a seniors' competition and a high school competition.



Celebrate! ...with family, friends and neighbours

a safe city



DID YOU KNOW?

INTEGRATED FIRE AND EMERGENCY MEDICAL SERVICES RESULT IN A HIGHER STANDARD OF SERVICE.

Protective services offer peace of mind

Spruce Grove's local RCMP detachment, community peace officers and our integrated full-time fire and emergency medical services keep residents and businesses safe 24/7.

The Safe City initiative links residents, businesses and community groups with protective services to promote community and crime prevention programs that make our city a safer, healthier place to live.

Health and professional services available for the whole family

The Queen Street Medical Centre, a state-of-the-art 80,000-square-foot complex, features four family medical clinics including an after-hours walk-in clinic. This facility offers a full range of medical, diagnostic and laboratory services all under one roof.

A number of other medical and dental clinics, including new offices at the Tri Leisure Village, also serve Spruce Grove.

The WestView Health Centre, seven kilometres west of Spruce Grove, and the Misericordia Hospital in west Edmonton are full-service care facilities. Copper Sky Lodge, Spruce Grove's newest assisted living facility, is available to residents through medical referral.



QUEEN STREET MEDICAL CENTRE



For more information

City of Spruce Grove
315 Jespersen Avenue
Spruce Grove, Alberta T7X 3E8

Phone: 780-962-2611, ext. 293
E-mail: invest@sprucegrove.org

www.sprucegrove.org