

FINDING SUCCESS

FEATURE COMPANY PROFILES

SPRUCE GROVE ECONOMIC & BUSINESS DEVELOPMENT

investsprucegrove.ca

WHY SPRUCE GROVE...

- Community-wide access to high speed fibre-optic internet connectivity throughout industrial area
- Local skilled labour force - looking for opportunities to work closer to home
- Close connections to roads, rail, and air
- Strategic location provides access to north-western Alberta and northeastern British Columbia
- A non-residential tax rate significantly lower than minutes away in Edmonton
- High-visibility commercial development opportunities
- Shovel-ready, fully serviced industrial land - including fibre optics - ready for development
- An established industrial and commercial base that supports business prosperity



» Spruce Grove is the service and supply destination for a trade area population of 150,000. The City is an integral part of the Greater Edmonton Metropolitan Region, boasting a population of 1.5 million.



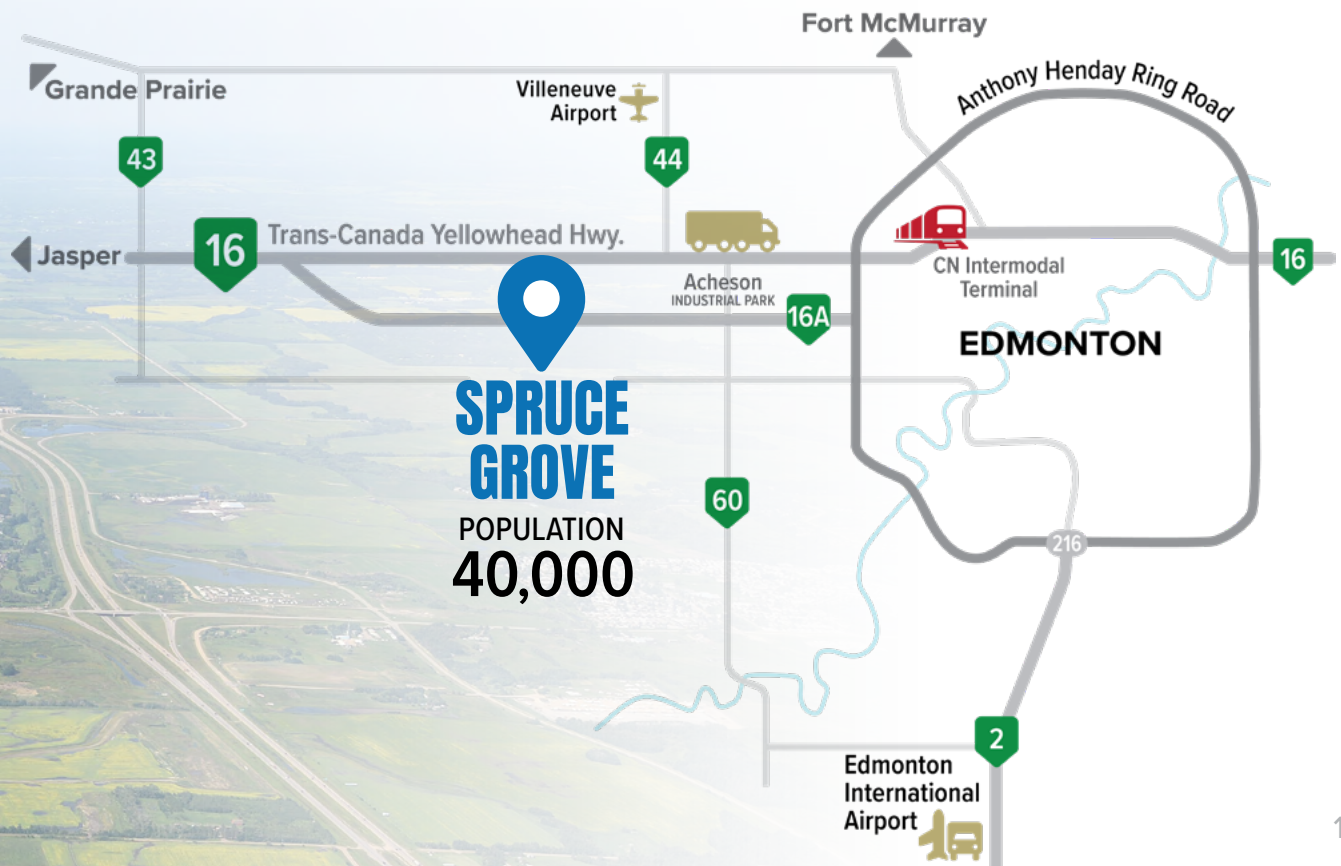
Spruce Grove is the place to achieve true success.

THE PLACE WHERE BUSINESS HAS NO LIMITS.

The industrial and commercial businesses in Spruce Grove are vital to the region's economic and social success, and the valuable products and services they provide are just the beginning.

Innovation at its finest is found here, evident among the innovative business models, technology, partnerships and quality assurance. **Forward-thinking entrepreneurs** in Spruce Grove are making major strides in the worlds of manufacturing and production, construction, engineering and service.

It is their expertise and commitment that **bring new ideas to the forefront of change** and **fuel the local economy** by promising local jobs and promoting diversification that will ensure sustainability in the long-term. Their dedicated involvement in the community and tax contributions support municipal services, such as policing, recreation, and emergency and social services. Their prosperity improves property values and ultimately, the **quality of life** in the region. These local businesses are a **source of pride** in Spruce Grove – they firmly establish that here, in our City, success has no limits.





PREFERRED CARRIERS INC.

preferredcarriers.com

Driven to serve a unique customer base, Ray Fennig started Preferred Carriers with his wife and daughter in 2005. Specializing in freight service, including oversized loads and less-than-truckload and full truck load shipments, the small family business grew to a fleet of 40 trucks consisting of 30 company-owned trucks and 10 owner-operator trucks and now employs 45 staff achieving millions of dollars in sales each year. *"Our commitment to service has been the most important key to our success,"* says Ray. *"We believe that as a transport provider, we are an extension of our customers' businesses, and that perspective keeps the needs of our customers front and centre."*

Customers across western Canada and the Texas-Oklahoma region and midwestern United States have come to trust Preferred Carrier's proven performance. The company's use of satellite GPS technology allows orders to be tracked and logged to the minute, giving peace of mind of where loads are at all times. This has built an inventory of repeat customers that value how rare reliability is in the marketplace.



PREFERRED
Carriers Inc.

That reliability is also due in large part to the professional network of lease operators and PCI certified sub-contractors that Preferred Carriers partners with to deliver exceptional service. *"We have strong partners, and we have everything we need in one location,"* adds Ray. *"Everything is done centrally right here in Spruce Grove."* Location has contributed to the company's success, and there is room to grow on its 4.6 acres in the Spruce Grove Industrial Park, with its 19,000-square-foot facility that includes a large office, repair shop with five bays, and an oversized wash bay.

As an equal opportunity employer, Preferred Carriers is proud of its staff culture. For them, staying local and supporting local is key. Most of the company's employees live in Spruce Grove and appreciate the lifestyle that affords, being 10-15 minutes from home and skipping city rush hour.

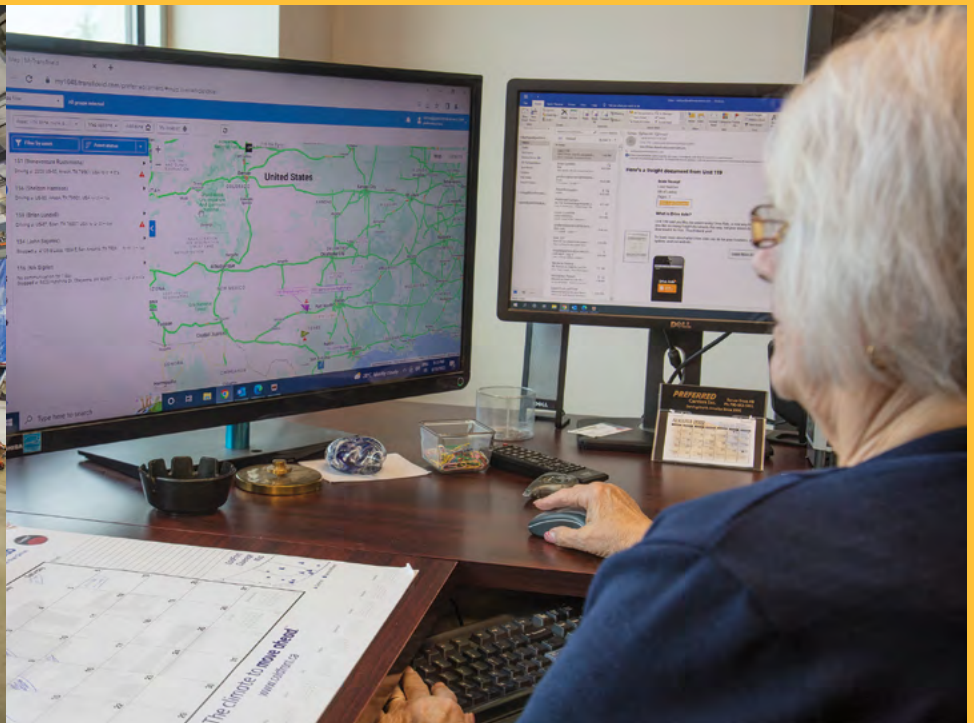
"Our staff are our future," emphasizes Ray. *"We are proud to say we have some of the best women and men in the business."* Acknowledging this sheds light on the company's future. *"We plan to keep growing here in Spruce Grove."*





“ Everything is done centrally right here in Spruce Grove.”

— Ray Fennig, President of Preferred Carriers Inc.





ALBERTA PRECAST

albertaprecast.com

Alberta Precast's team exudes an engaging entrepreneurial spirit—a characteristic that is early testament to the company's capacity for success. Operations began in June of 2018 after purchasing the 85,000 square foot facility in Spruce Grove, and the company now prides itself in offering superior quality precast concrete products that are 'engineered for strength and designed for life'.

"We can offer our clients faster build times, significant cost savings and greater durability and versatility," says Owner, Jack Seguin. The fully-automated and climate-controlled manufacturing process guarantees the highest quality concrete with exact measures and laser precision, and end products that arrive on site ready to be installed.

Their products, such as solid or insulated sandwich wall panels, firewalls, elevator shafts and specialty concrete items, are custom-built to fit the unique applications of clients in the industrial, commercial, residential, institutional and agricultural sectors. *"Our process allows us to build year-round and perform strength and quality tests before every product leaves our facility, something which on-site casting does not allow for,"* adds Jack.



"Retaining long-term employees is key. It's difficult to do, but we've done it in Spruce Grove."

4

— Jack Seguin, Owner of Alberta Precast Products

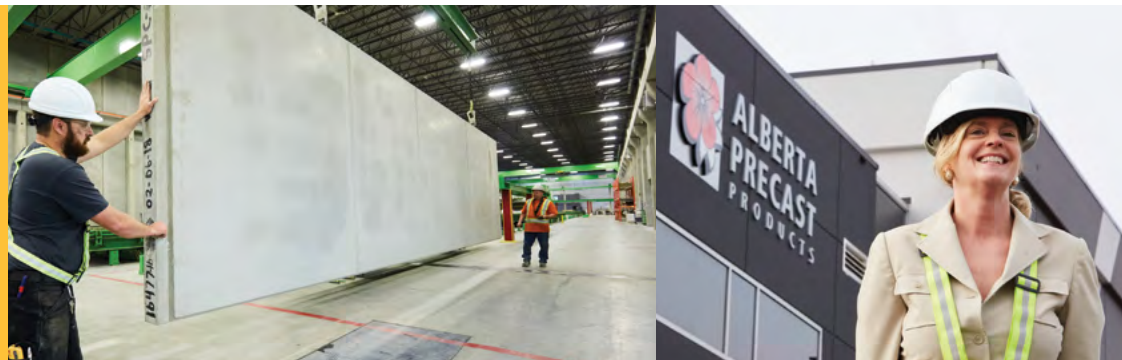
investsprucegrove.ca



Jack Seguin, Owner

Construction possibilities don't end with the structural benefits that Alberta Precast's concrete provides but goes beyond with what they call the 'lipstick'—attractive decorative details, such as painted steel finishes, wood and stone textures and brick inlays—which lets each customer make the products their own.

Reaching customers with ease requires good access to major highways for transport, a critical factor in the decision to locate in Spruce Grove. With its favourable location and specialized capabilities, the Alberta Precast team is already looking to the future and considering opportunities for expansion. *"We have what we need here, and we know that the quality and future of our business depends on the quality and vision of the people we employ,"* explains Jack. *"Retaining long-term employees is key. It's difficult to do, but we've done it in Spruce Grove."*





RJ ENTERPRISES

rjenterprises.com

RJ Enterprises is an exciting and growing venture with its head office in Spruce Grove and an ever-expanding number of cutting-edge businesses on their roster. Founder and CEO Jack Seguin has been named one of Canada's Top Energy Innovators, and under his guidance, companies under the RJ Enterprises umbrella span environmental, industrial, real estate and food industries, and employ over 400 people during peak seasons. *"Our companies are growing in this area, so Spruce Grove was a natural choice,"* says Jack.

One of the latest additions in Spruce Grove is the South Century Driving Range, which provides the region with the ultimate golf experience to golfers of every skill level. Another exciting move involves the construction of a new, 120,000 square foot food manufacturing facility in Stony Plain to bring RJ Enterprises' English Bay Blending and Fine Chocolates to the Edmonton region, set to open its doors in 2025. English Bay, a highly accomplished food service, retail and private label company, has been a significant player in the RJ group for decades. Originally based in Delta, BC, the company supplies customers, including large chains such as Costco and Sobeys, exquisite chocolates and bars.

RJ Enterprises also offers water clarification and oil recovery technologies with its technology division, as well as high-quality, customizable metal fabrication products engineered and machined out of its 55,000 square foot facility in Drayton Valley.

RJenterprises



**WILD ROSE
READY MIX**

Together with RJ MacLean Tank Services of Stony Plain, the leader in specialized tank cleaning equipment and services, these businesses challenge traditional oilfield processes and industry methods with innovative practices that improve safety, efficiency and sustainability in energy.

RJ Enterprises' Alberta Precast Products has been thriving in Spruce Grove since 2018 as well, along with Wild Rose Ready Mix, which shares the facility space with Alberta Precast in the City's Shep Industrial Park. With a fleet of 16 mixer trucks and a concrete production plant that is capable of producing 100 cubic metres per hour, Wild Rose Ready Mix services local concrete projects with ease. In addition, a variety of development projects in Stony Plain's North Business Park continue to expand. *"With the varying needs of our businesses, being close to major highways is very important,"* adds Jack.

While location is critical, the company is finding staff to be its greatest resource. "Our team is exceptional, and we help each other across departments and businesses," adds Jack. *"No one is siloed and this builds on our strengths."* With its award-winning staff—an impressive array of diverse positions, from entrepreneurs and tradesmen to chemists and food scientists—RJ Enterprises seeks to empower each business entity, to enhance sustainability and ultimately, improve upon the status quo.





“ We are committed to fostering meaningful relationships with the communities where we live and work. Our 30-year presence in Spruce Grove has allowed us to continue to act as a partner as we continue to safely deliver the energy people need, every day. ”

– Matthew Quist, Manager, Canada Warehouses, TC Energy





TC ENERGY

tcenergy.com

TC Energy is a leader in the responsible development and operation of North America's energy infrastructure, including natural gas and oil pipelines and nuclear power facilities. Across its business lines and immense geographical footprint, which spans six Canadian provinces, 38 U.S. states and 11 Mexican states, TC Energy is committed to fostering a culture of innovation across the company – encouraging every one of its 7,500 employees to do the same. As one of Glassdoor's Best Places to Work in Canada, the company has been operating their facility in Spruce Grove since 1981.

The company's Spruce Grove site serves as one of its regional facilities, focusing on supporting construction services and providing warehouse space. The site is on a 40-acre parcel of land in one of Spruce Grove's industrial parks.

Through TC Energy's community giving program, Build Strong, the company invests in organizations that are integral to local communities, and its business. TC Energy's goal is to help build strong and vibrant communities.

- » An exciting cluster of energy sector pipeline related businesses is starting to emerge in Spruce Grove – TC Energy, C & L Pipeline Equipment & Supplies, MidWest Pipelines, Cross Country Canada Supplies & Rentals, Sureus Murphy Joint Venture, and Thompson Construction Group are all successful and/or expanding companies within this industry.
- » Easy connections to highways, rail, and air offer direct routes to customers and rapid response access to the growing system of pipelines throughout western Canada.





“ Spruce Grove offers us the comfort that, when we do choose to grow, we have the most important resource available to us – good quality people. ”

– Kyle Campbell, President and Co-Founder of Cam Tran Co. Ltd.



CAM TRAN CO. LTD.

camtran.com

As Canada's largest full line distribution oil filled transformer company, Cam Tran has pursued its mission of transforming expectations in Spruce Grove since 2015. With the head office established in 1982 in Colborne, Ontario, Spruce Grove is one of Cam Tran's three satellite plants across the country. The facility specializes in pole mounted transformers designed for exceptional performance in electric utility distribution—their products provide essential service in rural, residential, commercial, and industrial areas.

A business culture of continuous improvement is key to Cam Tran's highly competitive advantage in the marketplace. Rethinking processes and pursuing innovation, the company places significant value on ideas, leadership, and collaboration. *"We don't just build transformers here, we build people and teams as well,"* says Graham Cook, Local Operations Leader. Cam Tran's Spruce Grove roster of 40 staff work 7 days a week, and recently doubled production.

"We've had so much success with the labour pool in Spruce Grove that our ideal expansion is to add to what we have here," says Kyle Campbell, President and Co-Founder. *"Spruce Grove offers us the comfort that, when we do choose to grow, we have the most important resource available to us – good quality people."*

Since opening the Spruce Grove location – a 28,000 square foot facility on 3 acres in the City's Diamond Industrial Park – Cam Tran has focused on growth in the Western Canadian market. Its state-of-the-art equipment and innovative renewal and recycle systems manufacture unbeatable products, and its unique business model based on localized service can be largely attributed to the company's location in Spruce Grove.

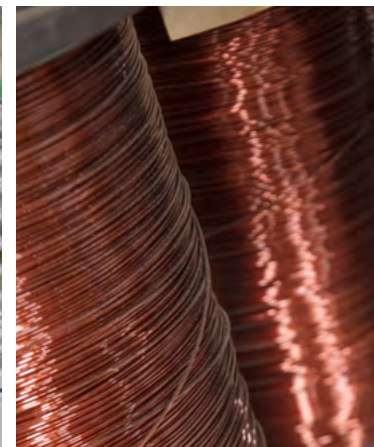


"After a weather event that knocks out power, we're only hours away from the customer," says Graham. Without Cam Tran's service, many Western Canadian utility providers would wait days to receive the products and service they require to restore electricity. Being close to customers has made all the difference in the company's success.

With an eye to the future, plans are underway to seek new markets in the United States. *"We have a strategic advantage that we are the only transformer manufacturer in North America with more than one facility,"* adds Kyle. *"And our local business model has allowed us to develop strong relationships with other businesses. For our support services, we choose the smaller, local companies. It's important to us to build relationships and make a difference in the community."*



Graham Cook, Local Operations Leader





INNOVATOR INDUSTRIAL SERVICES

innovatorind.com

Now in its 15th year, Innovator Industrial Services has seen incredible advancements in technology. The company has kept pace by committing to offer the highest quality, cutting-edge developments to its clients across all industrial sectors, to inspect, repair and modify pressurized systems – as the name indicates, Innovator Industrial does not shy away from breaking new ground with innovation.

Innovator Industrial develops and sources new and exclusive technology and delivery methods that improves safety, drives productivity, and optimizes cost effectiveness when working with systems under pressure. One focused approach involves a suite of new technology to perform ‘cold work’ – weldless connections, leak Repair, engineered composite pipe repair, sparkless grinders, freeze plugs and forge bonding – in place of ‘hot work’, such as cutting and welding, where fire hazards and explosion are imminent risks.

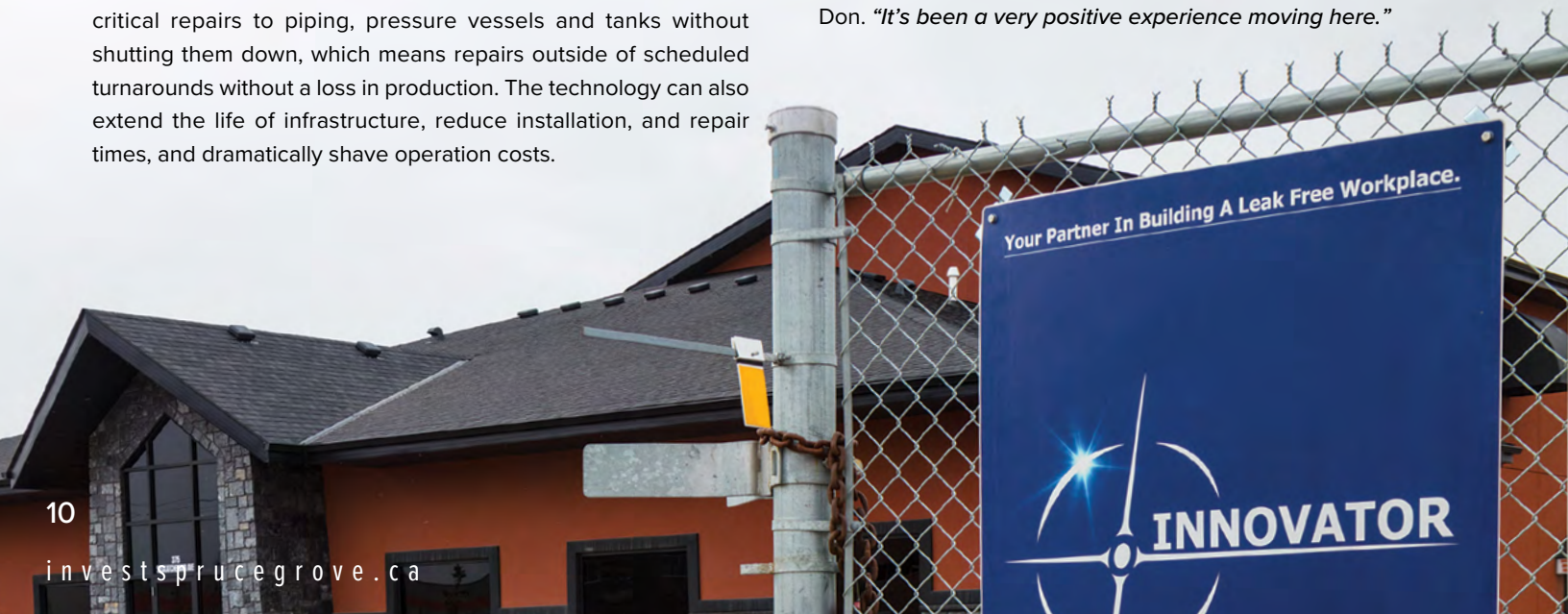
Without the creation of sparks or flames, cold work is significantly safer than hot work, which can lead to fires or explosions. Innovator Industrial’s cold work technology allows clients to not only drastically improve safety, but also find radical efficiencies and cost savings. With the Innovator advantage, clients can make critical repairs to piping, pressure vessels and tanks without shutting them down, which means repairs outside of scheduled turnarounds without a loss in production. The technology can also extend the life of infrastructure, reduce installation, and repair times, and dramatically shave operation costs.

The company originally located in Edmonton but moved to Spruce Grove in October of 2020 in search of more space to match the momentum of its growth. The 9,600-square-foot facility on 2.6 acres in Spruce Grove serves as head office and base of operations for the company, which holds three other office locations, including Fort McMurray Alberta, Hamilton Ontario, and Saint John New Brunswick.

“When we looked into locating in Spruce Grove, we quickly realized the benefits,” says Don Cooper, CEO & Visionary of Innovator Industrial. “It’s a strategic move. We needed the land and space to grow, and we found it here. But we also found a very supportive community and business-friendly city council.”

The company’s current focus is supporting strategic clients from coast to coast in Canada with plans to extend that to the United States in the next 24 months. Advancements in the technology that Innovator Industrial provides continues to progress, as does their scope of projects and staff complement. With more than 40 fulltime staff across Canada and as many as 100 seasonal team members, more are expected to join the innovator family as we forge ahead toward our long-term vision to help 5000 companies eliminate leaks in their facilities and reach zero annual injuries for their teams and their families.

“We received a strong welcome from the City of Spruce Grove, and they were very helpful in solving any issues we faced,” adds Don. “It’s been a very positive experience moving here.”





“ We needed the land and space to grow, and we found it here. ”

— Chris Coombs, General Manager of Innovator Industrial Services





“Our customers love our location here.”

— Janelle MacKay, Owner of Emmaline Bags Inc.





EMMALINE BAGS INC.

emmalinebags.com

Inspired while living for a time in Australia, Janelle MacKay took a shot at making her own patterns for a simple and beautiful bag. The journey that followed uncovered her natural talent and passion for designing and making bags and sourcing out interesting, practical materials. She established Emmaline Bags Inc. in 2012, and what began as a home-based business has grown into a booming one-stop-shop for home sewers and bag enthusiasts. The newly built 8,300 square foot facility in Spruce Grove's Campsite Business Park, with its 1,500 square foot brightly lit and inviting retail store, provides sewers with everything they need to make beautiful and functional bags of their own.

"I had trouble finding specific hardware for my bags and I knew that others would as well, so I started bringing them in," says Janelle. "The first shipment of materials was waiting for me in Canada when I moved back from Australia."

Emmaline Bags has flourished into a hub that has attracted attention from bag-making enthusiasts around the world, with its vast and carefully curated collection of fabrics, patterns, notions, and hardware, sourced from both local and international suppliers, which cater to a wide range of tastes and preferences. Customers seek out Emmaline's exclusive pattern designs, designed by Janelle and indie pattern designers.

With eleven staff members and her husband and daughter now joining her at the helm, Janelle plans to continue to expand by offering an ever-evolving range of products and services in Spruce Grove. The City's atmosphere and location have contributed to the plans to grow here.

"The main reason we chose Spruce Grove is its proximity to home, schools and family," adds Janelle. "Working close to home is a high priority. Spruce Grove is a city with a small-town feel—not too much traffic, but still has all the amenities we need for our family and staff."



Passionate staff are one of the company's greatest strengths as it pursues a vision for not only providing high-quality bag-making supplies and equipment, but also comprehensive resources, tutorials, and workshops to help aspiring bag makers learn and grow their skills. The business has developed a welcoming and inclusive space and online inventory where home sewers can find inspiration, guidance, and all the tools necessary to bring their bag-making ideas to life.

"We ship internationally daily, but we have also created a destination spot for our customers wanting to travel to our store," says Janelle. "We have found that our customers love our location here, as many come from rural areas in Alberta. The location, for our customers and for easy access to suppliers, is very important to the success of our business."





“From the beginning, Spruce Grove was a perfect fit. It means a great deal to us to be part of this community.”

– Laura Jo Gunter, NAIT president and CEO



NORTHERN ALBERTA INSTITUTE OF TECHNOLOGY (NAIT) – Spruce Grove Campus

nait.ca

NAIT's Spruce Grove Campus represents an important and historic partnership to enhance post-secondary education and business development opportunities in Alberta. Since its opening in 2016, the 160-acre campus and innovative 12,600-square foot facility has allowed the polytechnic institute to expand its popular Crane and Hoisting Equipment Operator program to nearly double its former capacity, with the ability to accommodate over 500 apprentice students per year.

With seven cranes on site, the largest with an extension capability equivalent to a 16-storey building, the campus provides students with valuable hands-on learning. NAIT's Spruce Grove campus employs some of the world's most advanced technology and equipment, including cutting-edge classrooms and simulation labs to supplement on-site outdoor training. Its world-class facility has been instrumental in meeting the demand for boom truck and mobile crane operators in a wide variety of industries across Alberta and beyond, including construction, forestry, mining, and the oil and gas sector. Other NAIT programs, including the boilermaker, ironworker and steamfitter-pipefitter programs, also visit the campus to complete outcomes involving lifts and rigging, providing those students with additional relevant and real-world experiences.

"From the beginning, Spruce Grove was a perfect fit as the location for our new campus and a great partner in elevating the student experience," says Laura Jo Gunter, NAIT president and CEO. "Over the years, that partnership has become stronger and deeper. We've expanded our relationships with the city, the surrounding county, and with local industry. It means a great deal to us to be part of this community."

Additionally, NAIT's Corporate & Continuing Education division provides on-site and virtual training for private entities and organizations that require custom training programs to upskill employees. Companies leverage NAIT's expertise and resources to combine courses and programs that meet their specific training requirements.

Activities at the Spruce Grove campus have been transformative for NAIT and Spruce Grove, yet there is so much more to come. As NAIT continues to move towards a "one campus+" model, the Spruce Grove campus could become home to other programs not very conducive to delivery in the middle of a major urban centre, such as Heavy Equipment Technician and other space intensive programs. As the largest apprenticeship trainer in Canada and a world-leading polytechnic, NAIT will continue to excel in delivering technology based, hands-on training in partnership with industry to empower a highly skilled workforce into the future.





CROSS COUNTRY CANADA SUPPLIES & RENTALS

crosscountrycanada.ca

Cross Country Canada Supplies & Rentals (CCCSR) is a full industrial supply business offering equipment rentals, geosynthetics and supplies to a multitude of industries—everything from PPE and environmental protection supplies to dozers, compressors, and pipeline testing equipment. While the business caters largely to the pipeline industry, it serves a wide range of industrial and commercial clients across Canadian markets, including both large, diversified contractors and niche specialty contractors.

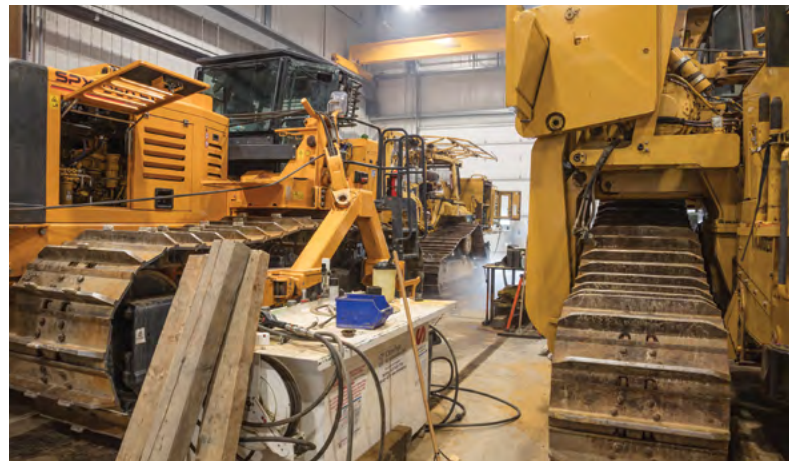
“We know and understand the businesses we serve because we’ve worked extensively in the field,” says Tim Martin, CEO. *“With our inside knowledge and experience in construction projects, we know what our customers need and how they work.”* Cross Country deliberately seeks out employees with a strong construction skill set and operates outside of the typical 9-5 business day, simply because their customers do. Delivering 24/7 assistance to their clients is a critical part of the company’s commitment to customer service, which has played a large role in their success.

The company began as Sideline Specialty Equipment Canada in 2014, with one employee in a garage. Its business model and growing customer base quickly garnered attention, and the business was purchased in 2015 by US company, Cross Country Infrastructure Services.

Headquartered on Saskatchewan Avenue here in Spruce Grove, their \$10 million development includes a 4,400 square foot office, 15,000 square foot warehouse, and 14,300 square foot maintenance and wash bay on an 11.6-acre lot.

“We chose Spruce Grove because it had the best real estate prices in the area compared to other industrial parks,” adds Tim. *“And logistically, everything is here – infrastructure, amenities and the transportation network to access our customers in all directions.”* While their original choice to locate in Spruce Grove was logistical, their choice to expand here was tied strongly to their staff and their commitment to the community.

In the fall of 2021, Tim Martin and his business partner Kade Demuth, along with a group of dedicated employees, acquired ownership of Cross Country Infrastructure Services here in Canada and rebranded as Cross Country Canada Supplies and Rentals, a 100% Canadian and employee owned company. *“We are eager to have gained autonomy in our ability to pivot and adapt our business to meet the ever-changing needs of the industry.”* says Tim, *“And to support our customers in their ongoing growth and success.”*





“ We stayed in Spruce Grove because the City has the workforce talent required to provide our markets with everything they need.”

– Tim Martin, CEO





“The level of support among businesses and other organizations in Spruce Grove is something I don’t think you see that often and is quite special.”

– Glenn Fereday , Chief Operating Officer for Thompson Construction Group





THOMPSON CONSTRUCTION GROUP

thompsoncg.ca

Proud to be 100 percent Alberta owned and operated for more than half a century, Thompson Construction Group consists of six business units and four offices throughout Alberta and British Columbia. With its beginnings in 1964, the company put down roots in Spruce Grove in 1984, and now operates from a 30,000-square-foot head office with a 40,000-square-foot shop.

“One of the main advantages to being located in Spruce Grove is the sense of community and local support,” says Neil Matheson, Thompson Construction Group’s Chief Financial Officer. *“The feeling of home and family orientated culture has allowed us to retain our most valuable asset: our people. Thompson Construction Group is proud to call Spruce Grove home.”*

Thompson Construction Group is renowned as an industry leader in a variety of light and heavy civil earth moving, highway, mining, and plant site construction projects across Western Canada. From engineering to procurement and construction, the company is dedicated to its relationships with suppliers, customers, and communities. Investment in their equipment and employees, approximately 1,400 during peak season, translates into more cost effective, timely and progressive projects.

The company’s leadership consistently takes bold steps toward innovation and self-sufficiency. The creation of an infrastructure division in 2016 brought a new focus to municipal infrastructure construction and land development in Edmonton and the surrounding area. Establishing an internal paint division in 2020 now allows the company to paint its own equipment – everything from dozers to haul trucks.

- » Non-residential and residential construction are well established and expanding sectors offering opportunities in areas such as heavy construction, modular and pre-fab housing, engineering and construction operation management.

“Our group has a very strong commitment to our customers, not just to managing projects and processes, but to ensuring that our equipment is of the highest quality,” adds Chris Mendez, Corporate Services Manager.

With better internal controls the company can minimize waste, tailor work to the needs of clients, and deliver faster, more efficient service at a lower cost. But the commitment doesn’t end there. From construction to community, Thompson Construction Group continuously provides generous support to a number of local organizations and events, such as the Tri Community Foundation, Kids Sport, Make a Wish Foundation, Stollery Children’s Hospital Foundation and the Spruce Grove Saints. *“We’re lucky to be part of such a strong community,”* says Glenn Fereday, Chief Operating Officer. *“The level of support among businesses and other organizations in Spruce Grove is something I don’t think you see that often and is quite special.”*



“ We are well supported by the City, we have great access where we are, and our staff are happy to live in Spruce Grove. It’s a diverse, growing, and vibrant community.”

– Toni Moretto, Director of Operations – Canada and Alaska,
WPI Canada Inc.





WPI CANADA INC.

wpi.com

Waukesha Pearce Industries (WPI), a pioneer in engine technology with nearly 100 years in business, has brought its legacy to Canada through a partnership that landed its Canadian head office in Spruce Grove. With seventeen US locations and three other locations in Canada – Nisku, Grande Prairie and Fort St. John – the Texas-born company is extending its reach across North America.

WPI's roots in Spruce Grove begin with Toni Moretto, who moved his oil and gas field equipment supply and maintenance company, Trittech Compression Inc., to Spruce Grove in 2005, where he invested in Canada's first natural gas engine test cell. In 2009 the highly specialized business was purchased by Hoerbiger Holding AG, a global player in compression, automation, and drive technology. When Hoerbiger shifted its operations in 2020, WPI took the opportunity to partner with Toni Moretto and expand WPI Canada.

Now Director of Operations for WPI Canada, Toni oversees work at the roughly 40,000 square-foot facility on 6 acres in Spruce Grove's Yellowhead Industrial Park. *"WPI has approximately 60 employees in Canada, with 20 in Spruce Grove,"* says Toni. *"We expect that to rise to 40 in the near future."*

Touted as Canada's only one-stop-shop for everything natural gas engine-related, the company offers certified remanufacturing of natural gas engines and compressors, the world's largest inventory of Waukesha engine parts and Ariel compressor parts, and a vast inventory of zero-hour remanufactured engines for all major equipment lines, including Waukesha, Caterpillar, Cummins, White Superior and Arrow.

The facility boasts a full machine shop, 40-ton overhead crane, and Canada's only natural gas dynamometer, with capabilities of up to 4,000 horsepower and 4 to 24-hour diagnostic test run options. Dyno testing and tuning increases engine reliability and certifies that customer's engines will be free of defects. And the company's excellence in customer service doesn't end there – WPI also offers 24/7 emergency service, application engineering, product training, construction and energy solutions, and more.



As expansion continues in Canada with the recent opening of the Grande Prairie and Fort St. John, BC locations, the company is focusing on a new international initiative to grow into global markets. Active throughout the world as a leading service provider in all oil and gas production related equipment, WPI also supports mining and compression industries and power generation throughout North America and in Asia, South America, Africa and the Middle East. *"We also see a lot of potential to partner with and support local business in the region. It just makes sense with our capacity to support the natural gas industry and heavy equipment repairs on the diesel engine side,"* adds Toni. Spruce Grove is a central hub – for headquarters and management of both Canada and Alaska operations, and international operations as well.

Locating in Spruce Grove has been instrumental in the evolution of the business. *"It's a great community,"* Toni states. *"We are well supported by the City, we have great access where we are, and our staff are happy to live in Spruce Grove. It's a diverse, growing, and vibrant community."*





'The Bee Maid Story – From Hive to Home'
ON SALE NOW in the Bee Maid gift shop –
70 Alberta Ave., Spruce Grove



BEE MAID HONEY

beemaid.com

The Alberta Honey Producer's Cooperative has been around for more than six decades and has had a large presence in Spruce Grove since it moved from Edmonton to its modern packing facility built in 1993. The 72,000-square-foot plant, located at the heart of Spruce Grove's Diamond Industrial Park, employs around 40 people and processes seven to eight million pounds of quality honey each year.

The company's unique business model has proven very successful. The Manitoba, Saskatchewan, and Alberta Honey Producer Cooperatives collaborate to process, market and ship Bee Maid's variety of liquid and creamed honey products worldwide. Members of the cooperatives are the actual beekeepers who raise the colonies and are also the co-owners of the Bee Maid brand – a strategy that has given beekeepers an advantage they may not have had otherwise.

Bee Maid Honey is proudly 100% Canadian and is the only honey producer in the country that sources all of its honey from its owners. Not only is the honey processed in Spruce Grove, but it is also packaged in plastic bottles, made right at the plant. Operations at the Spruce Grove facility have been instrumental in positioning the company as one of Canada's largest honey distributors.



- » 100% of Bee Maid Honey is pure Canadian honey
- » The Prairie Provinces produce, on average, 80% of Canadian honey
- » Honeybees are vital for pollination and can increase crop production by up to 8 times
- » Canadian honey is sold in 15 countries around the world
- » Together, Bee Maid's more than 300 members employ over 2,000 people
- » The estimated economic impact of honeybee pollination in Canada is over \$1 billion

“Bee Maid means quality. Period. It's a good outfit and its 100% Canadian. Everyone else uses Bee Maid as a benchmark for their honey.”

– Otto Boettcher, Bee Maid Beekeeper





READY ENGINEERING

readyengineering.com

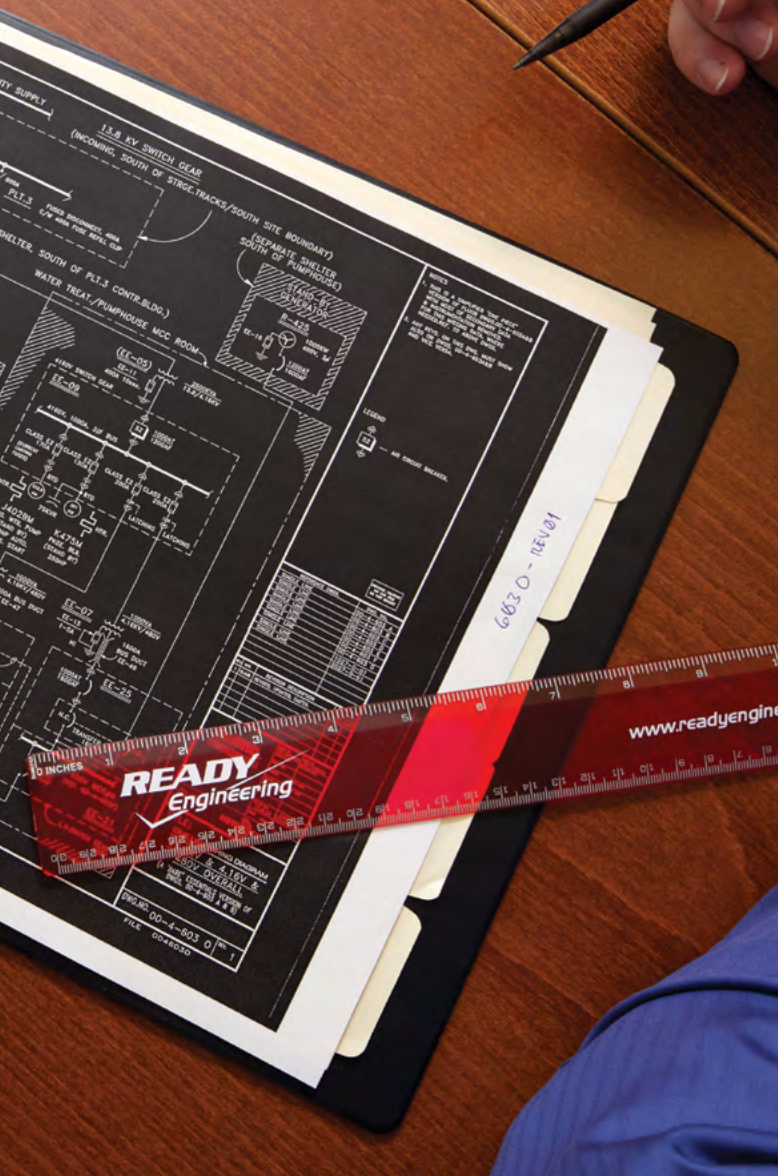
Lee and Susan Ready launched their Spruce Grove engineering firm in 1996 with three employees, a single client, and 750 square feet of office space. Now with 45 employees and offices across Western Canada and the United States, Ready Engineering is on the ground on six continents, providing worldwide support for their customers.

Their Spruce Grove location had what was necessary to support their booming success, including a steady supply of local staff from NAIT and University of Alberta programs, close proximity to Alberta's capital, and big city amenities. *"Spruce Grove has what Ready Engineering needs for the future development of our business,"* says Lee Ready, President of Ready Engineering. *"As a family and a business, we are not interested in living in a big city, but we want all the amenities that go with big city living. Spruce Grove and the neighbouring areas offer all we need for our business and our family life."*

"Spruce Grove also offers better rates for office space than we would find in Edmonton," adds Jordie Holton, Manager of Electrical Engineering. *"We have expanded within our facility and have more room to grow."* That growth is evident as the company develops relationships within a growing number of industries. The company assists clients in biofuels, agri-food, chemicals and fibers, mining, oil and gas, pulp and paper, special waste management, and nuclear, fossil, and green power generation.

Advancing into emerging markets is key for the company, and niche consulting is what sets it apart. Cryptocurrency is the newest field where Ready Engineering is making its mark and adding value, by supporting clients with engineering design, energy and heat dissipation, and sourcing green energy to minimize environmental impact.





Regardless of industry, Ready Engineering expertly addresses customer's concerns related to power system designs, control system installations and upgrades, software verification and validation, and design, commissioning, and start-up support. Its unique and exceptional level of service has garnered an impressive collection of awards – the company has received the PSMJ Circle of Excellence Award seven times and the PSMJ Platinum Award as well, all of which demonstrate its position as one of the best run engineering firms in North America. Other awards include Consulting Engineers of Alberta Showcase Award of Excellence for both Software and International projects, Alberta CIBC Small Business Award of Distinction, and Business of the Year from the Spruce Grove Chamber of Commerce.



“Spruce Grove and the neighbouring areas offer all we need for our business and our family life.”

– Lee Ready, President of Ready Engineering



**“ Spruce Grove is a desirable community
and everything that people need is here.
We’re excited for a strong future
in this city. ”**

– John McAffray, President of Alquinn Homes



ALQUINN HOMES

alquinnhomes.com

Alquinn Homes exemplifies vision and innovation within the home building industry with its unique approach that focuses on excellence in construction and complete customization for homeowners. By finding efficiencies in time and construction, the company's build time is one-third that of traditional home builders, allowing Alquinn to offer their customers a guaranteed possession date, which is very rare.

"Our mission when we started in 2011 was to build a better life – for our customers, our tradespeople and staff, our community and our family," says John McCaffray, President of Alquinn Homes. *"We strive to build spaces our customers will love to live in, and we encourage our staff to engage in the community and pursue things they're passionate about."* Their business approach was met with overwhelming response – the team set out to build 10 homes in the first year and instead met the demand for 40. They were up to 160 homes within four years in Spruce Grove, Stony Plain, Edmonton, Fort Saskatchewan, Morinville, Devon, Leduc and Sturgeon County.

"The key for us is to always remember we are building their home and not our house," adds John. *"We don't offer design palettes; our customers customize what they want. That's very critical. We are in the business of creating spaces for people to create lifetime experiences and memories".* Alquinn's stunning new 3,200 square foot facility in Spruce Grove showcases various customizable options and gives their customers the incomparable experience of customizing their home with support from a design consultant. Each home even comes standard with solar panels, the result of a valuable partnership with Solaré Canada, also in Spruce Grove.



While Alquinn is very proud of the experience it offers its customers, the company measures its true success by how it gives back to the community. Alquinn nurtures a very strong culture of giving; its team of 30 employees recognizes the importance of helping child and teen mental health services in the region. Alquinn works throughout the year with organizations such as CASA and Ronald McDonald House.

"Our community is important to us," explains John. *"Our families and our business have strong roots here. Our customers want to live here. Spruce Grove is a desirable community and everything that people need is here. We're excited for a strong future in this city."*





“ Everything we need
is here in Spruce Grove. ”

— Darrell Demers, Owner of Lea-Der Coatings





LEA-DER COATINGS

lea-der.com

Known throughout the world for its safety and environmental protection products for the oil and gas industry, Lea-Der Coatings made its start in Spruce Grove in 1994. A year after the company went global in 2006 with Lea-Der International, Darrell Demers, a long-time employee, purchased it and continued to build on its success. Now distributors in the US, Middle East, Mexico, Europe, Russia, Asia, and North Africa market an array of products that contribute to human safety, environmental protection, water filtration, noise reduction and more.

The company has made great strides in not only expanding globally, but also diversifying – Lea-Der Medical Services, an entirely new division, was incorporated in 2020. The division offers many new products related to the medical field and provides onsite drug and alcohol testing. Timing was right to allow the company to contribute to human and community safety with the rise of COVID-19, by distributing specialized sanitizing wipes and air filtration systems that help prevent the spread of the virus. Collaboration with several other companies and Global Affairs Canada is underway to bring Lea-Der Medical Services to the global stage as well.

When it came time for expansion, Darrell chose to stay in Spruce Grove, keeping Lea-Der's 12 employees in the new 10,000-square-foot state-of-the-art manufacturing facility in the Spruce Grove Industrial Park. *"Everything we need is here in Spruce Grove,"* says Darrell. *"The location is central to the domestic drilling market, we have support from the Mayor and Council, and the city is very family oriented to support our staff."*

While the company is best known for their drill floor traction matting, which is used in a wide variety of applications, they are always interested in new opportunities to serve customers in heavy industry and other sectors. Lea-Der is partnering with Northern Oil Research Technologies to upgrade bitumen at a low temperature, a process that creates less greenhouse gases in the process. The innovative technology has been patented to distribute to major oil company providers and produce a positive impact for the environment.



Looking toward the future, Lea-Der is always progressing. *"We've been very fortunate in that our greatest strength is achieving our goals. We've met and exceeded them through the dedication and abilities of our employees."*





CARGILL PROTEIN

cargill.ca

Cargill provides food, agriculture, financial and industrial products and services to the world. Together with farmers, customers, governments and communities, the company helps people thrive by applying valuable insights and over 150 years of experience. Its 155,000 employees across 70 countries are committed to feeding the world in a safe, responsible, sustainable way and improving the communities where they live and work.

Supporting local communities is an essential part of Cargill's commitment to being a responsible corporate citizen. Their facility in Spruce Grove provides support for local charitable and civic organizations and programs, such as food relief agencies, school and youth programs, and local environmental projects through their Cares Committee.

The Spruce Grove facility, located in the Shep Industrial Park, processes more than 65 million pounds of beef annually to supply the food service industry across Canada. Their highly engaged team of more than 100 individuals is committed to safely and efficiently producing a high-quality product each and every day for their customers.

"There is a friendly work environment in this city related to doing business and finding skilled employees," says Robert Smith, Plant General Manager. "Our Spruce Grove location gives us a direct route to highways and good access to rail service."

Cargill Limited, the Canadian division of Cargill, has been recognized as one of Canada's Top 100 Employers. The award recognizes companies that make significant investments in their employees and create atmospheres that encourage highly engaged and productive workforces.



“ There is a friendly work environment in this city related to doing business and finding the right employees. ”

– Robert Smith, Plant General Manager, Cargill Value Added Meats



Cargill is proud to be recognized as one of Canada's Top 100 Employers.





“ Our location in Spruce Grove has allowed us to build on our reputation. ”

— Frederik Lambert, General Manager
and Canada Country Manager





SURPLEC

surplec.com

Over their three decades of nation-wide operations, the name ‘Surplec’ has become synonymous with excellence in the market—the company is the preferred choice for transformer and power-related needs among major utility companies, medium to large facilities, and industries of all sizes across Canada. Specializing in the refurbishment of medium- and high- voltage transformers, Surplec’s range of comprehensive services spans repair, reconditioning, rentals and sales, as well as testing and certification for customers in the field or at their 10,000 square foot facility in Spruce Grove’s Campsite Business Park.

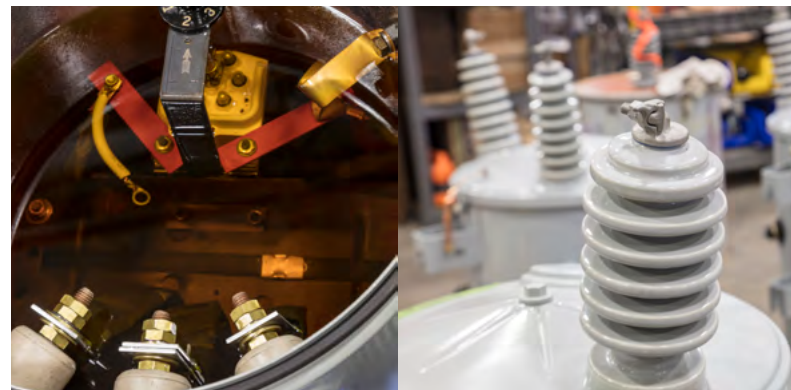
Surplec leads as the largest surplus buyer and re-manufacturer of transformer equipment in Canada, with the largest inventory of electrical equipment in the industry. Founded in 1987 by Mario Lambert in Sherbrooke, Quebec, the company expanded to Spruce Grove in 2014. Today, the Spruce Grove location employs 12 people, contributing to the company’s 100 employees at their seven facilities across Alberta, British Columbia, Ontario and Quebec. Alberta operations exemplify the synergy between a forward-thinking company and a strategic location.

“Surplec is often the first name that people think of when they think about transformers,” says Frederik Lambert, General Manager and Canada Country Manager. *“Our location in Spruce Grove has allowed us to build on our reputation. We are centrally located for Western Canada operations and can leverage the strong industrial presence here.”* Easy access to major centers and the industry across Alberta, British Columbia, and Saskatchewan streamlines logistics for Surplec, reducing lead times and enhancing the company’s ability to provide the timely and reliable services that power Western Canada.

Beyond transformer refurbishment, Surplec also serves as the representative for several manufacturers, offering new and state-of-the-art electrical products to the market. Their inventory of rental equipment supports unique client needs and swift solutions during unexpected power outages. As the only dedicated repair location in Western Canada, Surplec’s expert staff provide exceptional technical support and repair solutions.

“Spruce Grove has a skilled workforce for the transformers industry,” adds Frederik. The workforce and lower cost of land compared to other areas in the Edmonton region was a draw for the company when considering a location. *“Spruce Grove was the logical choice.”* And Surplec is thriving because of it, gaining attention from international markets.

Recently acquired by Integrated Power Services (IPS), a North American solutions provider for electromechanical equipment, rotating equipment and energy management systems, Surplec is set for significant growth. With rapid acceleration in demand from the U.S. and additional support through IPS, expansion at the Spruce Grove facility is among many exciting possibilities.



Surplec
AN  **IPS COMPANY**

CONTACT US TODAY



SPRUCE GROVE ECONOMIC AND BUSINESS DEVELOPMENT

investsprucegrove.ca

780-962-7608



City of Spruce Grove
315 Jespersen Avenue
Spruce Grove, Alberta T7X 3E8

