

FINDING SUCCESS

SPRUCE GROVE
FEATURE COMPANY PROFILES

WHY SPRUCE GROVE...

- Access to high speed fibre-optic internet connectivity throughout industrial area
- Robust, skilled labour force
- Close connections to roads, rail, and air
- Strategic location provides access to north-western Alberta and northeastern British Columbia
- A non-residential tax rate significantly lower than minutes away in Edmonton
- High-visibility commercial development opportunities
- Shovel-ready industrial land and available Class A industrial buildings
- An established industrial and commercial base that supports business prosperity

» Spruce Grove celebrates over 1,700 licensed industrial, commercial, and home-based businesses and not-for-profit organizations – all who contribute to Spruce Grove's economic vitality!



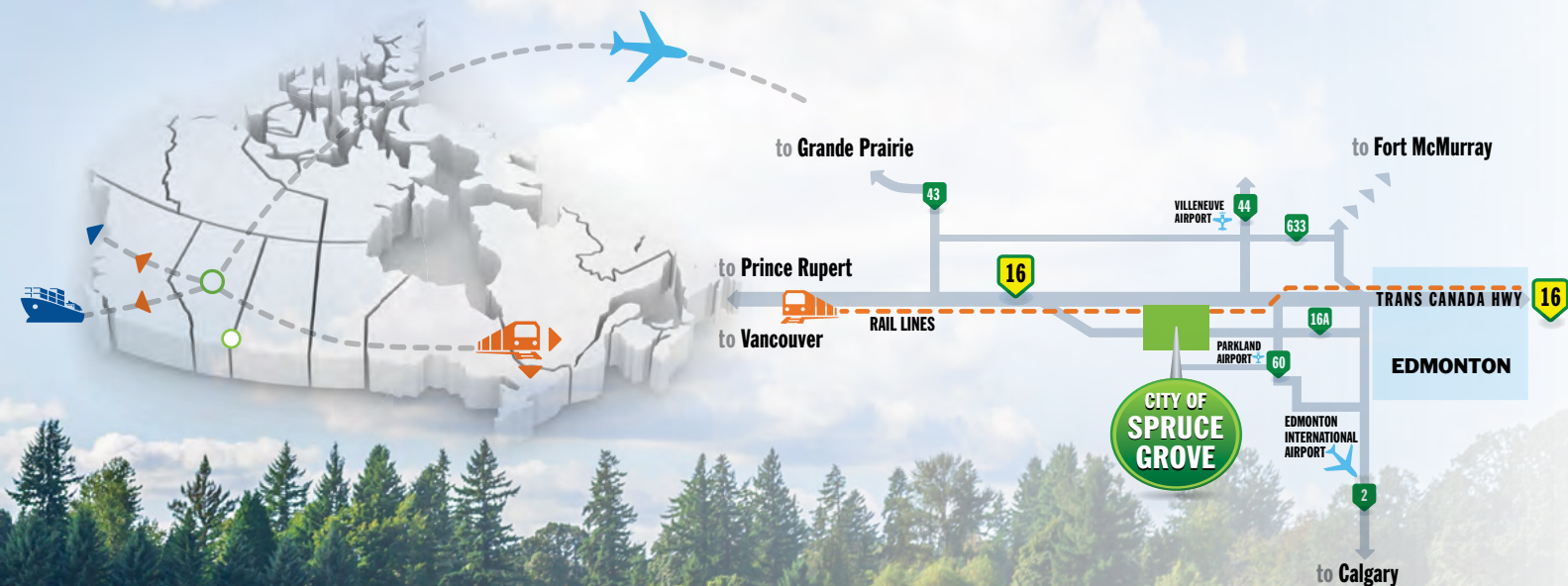
Spruce Grove is the place to achieve true success.

THE PLACE WHERE BUSINESS HAS NO LIMITS.



The industrial and commercial businesses in Spruce Grove are vital to the region's economic and social success, and the valuable products and services they provide are just the beginning.

Innovation at its finest is found here, evident among the innovative business models, technology, partnerships and quality assurance. **Forward-thinking entrepreneurs** in Spruce Grove are making major strides in the worlds of manufacturing and production, construction, engineering and service. It is their expertise and commitment that **bring new ideas to the forefront of change** and **fuel the local economy** by promising local jobs and promoting diversification that will ensure sustainability in the long-term. Their dedicated involvement in the community and tax contributions support municipal services, such as policing, recreation, and emergency and social services. Their prosperity improves property values and ultimately, the **quality of life** in the region. These local businesses are a **source of pride** in Spruce Grove – they firmly establish that here, in our City, success has no limits.





PREFERRED CARRIERS INC.

preferredcarriers.com

Driven to serve a unique customer base, Ray Fennig started Preferred Carriers with his wife and daughter in 2005. Specializing in freight service, including oversize loads and less-than-truckload and full truck load shipments, the small family business grew to a fleet of 40 trucks consisting of 30 company-owned trucks and 10 owner-operator trucks and now employs 45 staff achieving millions of dollars in sales each year. ***“Our commitment to service has been the most important key to our success,”*** says Ray. ***“We believe that as a transport provider, we are an extension of our customers’ businesses, and that perspective keeps the needs of our customers front and centre.”***

Customers across western Canada and the Texas-Oklahoma region and midwestern United States have come to trust Preferred Carrier’s proven performance. The company’s use of satellite GPS technology allows orders to be tracked and logged to the minute, giving peace of mind of where loads are at all times. This has built an inventory of repeat customers that value how rare reliability is in the marketplace.

That reliability is also due in large part to the professional network of lease operators and PCI certified sub-contractors that Preferred Carriers partners with to deliver exceptional service. ***“We have strong partners, and we have everything we need in one location,”*** adds Ray. ***“Everything is done centrally right here in Spruce Grove.”*** Location has contributed to the company’s success, and there is room to grow on its 4.6 acres in the Spruce Grove Industrial Park, with its 19,000-square-foot facility that includes a large office, repair shop with five bays, and an over-sized wash bay.

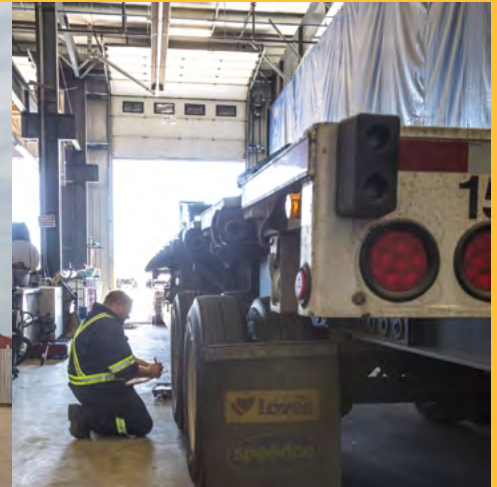
As an equal opportunity employer, Preferred Carriers is proud of its staff culture. For them, staying local and supporting local is key. Most of the company’s employees live in Spruce Grove and appreciate the lifestyle that affords, being 10-15 minutes from home and skipping city rush hour.

“Our staff are our future,” emphasizes Ray. ***“We are proud to say we have some of the best women and men in the business.”*** Acknowledging this sheds light on the company’s future. ***“We plan to keep growing here in Spruce Grove.”***



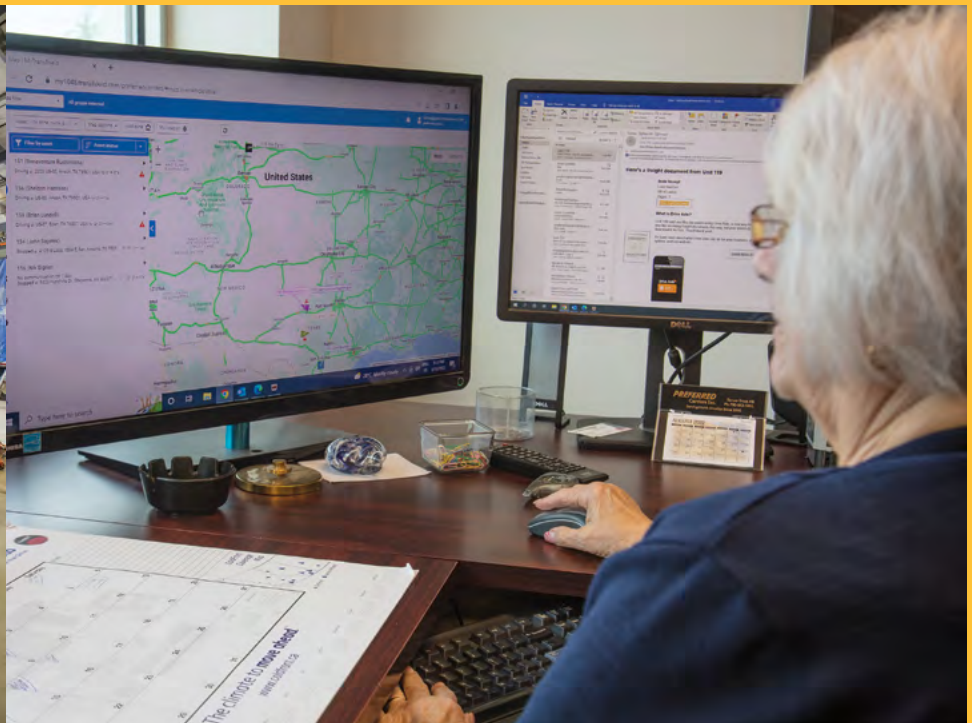
PREFERRED
Carriers Inc.





“Everything is done centrally right here in Spruce Grove.”

— Ray Fennig, President of Preferred Carriers Inc.





ALBERTA PRECAST

albertaprecast.com

Alberta Precast's team exudes an engaging entrepreneurial spirit – a characteristic that is early testament to the company's capacity for success. Operations began in June of 2018 after purchasing the 85,000 square foot facility in Spruce Grove, and the company now prides itself in offering superior quality precast concrete products that are 'engineered for strength and designed for life'.

"We can offer our clients faster build times, significant cost savings and greater durability and versatility," says Owner, Jack Seguin. The fully-automated and climate-controlled manufacturing process guarantees the highest quality concrete with exact measures and laser precision, and end products that arrive on site ready to be installed.

Their products, such as solid or insulated sandwich wall panels, firewalls, elevator shafts and specialty concrete items, are custom-built to fit the unique applications of clients in the industrial, commercial, residential, institutional and agricultural sectors. ***"Our process allows us to build year-round and perform strength and quality tests before every product leaves our facility, something which on-site casting does not allow for,"*** adds Jack.



**ALBERTA
PRECAST
PRODUCTS**



Jack Seguin, Owner

Construction possibilities don't end with the structural benefits that Alberta Precast's concrete provides but goes beyond with what they call the 'lipstick' – attractive decorative details, such as painted steel finishes, wood and stone textures and brick inlays – which lets each customer make the products their own.

Reaching customers with ease requires good access to major highways for transport, a critical factor in the decision to locate in Spruce Grove, and the facility is in close proximity to the Villeneuve aggregate pit for source materials. With its favourable location and specialized capabilities, the Alberta Precast team is already looking to the future and considering opportunities for expansion. ***"We have what we need here, and we know that the quality and future of our business depends on the quality and vision of the people we employ,"*** explains Jack. ***"Retaining long-term employees is key. It's difficult to do, but we've done it in Spruce Grove."***

"Retaining long-term employees is key. It's difficult to do, but we've done it in Spruce Grove."

4

– Jack Seguin, Owner of Alberta Precast Products

investsprucegrove.ca





RJ ENTERPRISES

rjenterprises.com

RJ Enterprises is an exciting venture new to calling Spruce Grove home. The company's Head Office, located in the Spruce Grove Industrial Park, will share the management of a handful of cutting-edge businesses with an office in Delta, BC.

Founder and CEO Jack Seguin has been named one of Canada's Top Energy Innovators, and under his guidance, companies under the RJ Enterprises umbrella span environmental, industrial, real estate and food industries, and employ 200-250 people during peak seasons. ***"Our companies are growing in this area, so Spruce Grove was a natural choice,"*** says Jack.

RJ Enterprises offers water clarification and oil recovery technologies with its technology division, as well as high-quality, customizable metal fabrication products engineered and machined out of its new 55,000 square foot facility in Drayton Valley. Together with RJ MacLean Tank Services of Stony Plain, the leader in specialized tank cleaning equipment and services, these businesses challenge traditional oilfield processes and industry methods with innovative practices that improve safety, efficiency and sustainability in energy.

English Bay Blending and Fine Chocolates, a highly accomplished foodservice, retail and private label company in Delta, BC, has been a significant player in the RJ group for decades. English Bay supplies customers, including large chains such as Costco and Sobeys, with fine dry blends, exquisite chocolates and bars.

RJ Enterprise's Alberta Precast Products came on board in 2018 followed by Wild Rose Ready Mix which just started operations out of our their Spruce Grove head office in July 2019. As well, a variety of land development projects in Stony Plain's North Business Park continue to expand. ***"With the varying needs of our businesses, being close to major highways is very important,"*** adds Jack.

While location is critical, the company is finding staff to be its greatest resource. ***"Our team is exceptional, and we help each other across departments and businesses,"*** adds Jack. ***"No one is siloed and this builds on our strengths."*** With its award-winning staff – an impressive roster of diverse positions, from entrepreneurs and tradesmen to chemists and food scientists – RJ Enterprises seeks to empower each business entity, to enhance sustainability and ultimately, improve upon the status quo.

RJenterprises



"Spruce Grove was a natural choice."

— Jack Seguin, Founder and CEO of RJ Enterprises





“We are committed to fostering meaningful relationships with the communities where we live and work. Our 30-year presence in Spruce Grove has allowed us to continue to act as a partner as we continue to safely deliver the energy people need, every day.”

– Matthew Quist, Manager, Canada Warehouses, TC Energy





TC ENERGY

tcenergy.com

TC Energy is a leader in the responsible development and operation of North America's energy infrastructure, including natural gas and oil pipelines and nuclear power facilities. Across its business lines and immense geographical footprint, which spans six Canadian provinces, 38 U.S. states and 11 Mexican states, TC Energy is committed to fostering a culture of innovation across the company – encouraging every one of its 7,500 employees to do the same. As one of Glassdoor's Best Places to Work in Canada, the company has been operating their facility in Spruce Grove since 1981.

The company's Spruce Grove site serves as one of its regional facilities, focusing on supporting construction services and providing warehouse space. The site is on a 40-acre parcel of land in one of Spruce Grove's industrial parks.

Through TC Energy's community giving program, Build Strong, the company invests in organizations that are integral to local communities, and its business. TC Energy's goal is to help build strong and vibrant communities.

- » An exciting cluster of energy sector pipeline related businesses is starting to emerge in Spruce Grove – TC Energy, C & L Pipeline Equipment & Supplies, MidWest Pipelines, Rozen Steelworks, Cross Country Canada Supplies & Rentals, and Thompson Construction Group are all successful and/or expanding companies within this industry.
- » Easy connections to highways, rail, and air offer direct routes to customers and rapid response access to the growing system of pipelines throughout western Canada.





“ Spruce Grove offers us the comfort that, when we do choose to grow, we have the most important resource available to us — good quality people.”

— Kyle Campbell, President and Co-Founder of Cam Tran Co. Ltd.



CAM TRAN CO. LTD.

camtran.com

As Canada's largest full line distribution oil filled transformer company, Cam Tran has pursued its mission of transforming expectations in Spruce Grove since 2015. With the head office established in 1982 in Colborne, Ontario, Spruce Grove is one of Cam Tran's three satellite plants across the country. The facility specializes in pole mounted transformers designed for exceptional performance in electric utility distribution—their products provide essential service in rural, residential, commercial, and industrial areas.

A business culture of continuous improvement is key to Cam Tran's highly competitive advantage in the marketplace. Rethinking processes and pursuing innovation, the company places significant value on ideas, leadership, and collaboration. ***"We don't just build transformers here, we build people and teams as well,"*** says Graham Cook, Local Operations Leader. Cam Tran's Spruce Grove roster of 40 staff work 7 days a week, and recently doubled production.

"We've had so much success with the labour pool in Spruce Grove that our ideal expansion is to add to what we have here," says Kyle Campbell, President and Co-Founder. ***"Spruce Grove offers us the comfort that, when we do choose to grow, we have the most important resource available to us – good quality people."***

Since opening the Spruce Grove location – a 28,000 square foot facility on 3 acres in the City's Diamond Industrial Park – Cam Tran has focused on growth in the Western Canadian market. Its state-of-the-art equipment and innovative renewal and recycle systems manufacture unbeatable products, and its unique business model based on localized service can be largely attributed to the company's location in Spruce Grove.

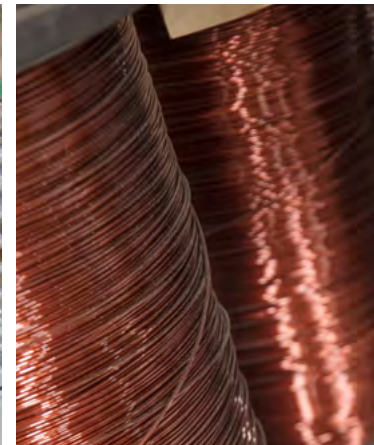


"After a weather event that knocks out power, we're only hours away from the customer," says Graham. Without Cam Tran's service, many Western Canadian utility providers would wait days to receive the products and service they require to restore electricity. Being close to customers has made all the difference in the company's success.

With an eye to the future, plans are underway to seek new markets in the United States. ***"We have a strategic advantage that we are the only transformer manufacturer in North America with more than one facility,"*** adds Kyle. ***"And our local business model has allowed us to develop strong relationships with other businesses. For our support services, we choose the smaller, local companies. It's important to us to build relationships and make a difference in the community."***



Graham Cook, Local Operations Leader





INNOVATOR INDUSTRIAL SERVICES INC.

innovatorind.com

Around for over a decade, Innovator Industrial Services has seen incredible advancements in technology. The company has kept pace by committing to offer the highest quality, cutting-edge developments to its clients in the oil and gas industry to inspect, modify and repair pressurized systems – as the name indicates, Innovator Industrial does not shy away from breaking new ground with innovation.

Innovator Industrial develops and utilizes new and exclusive technology for improving safety and optimizing efficiency when working with systems under pressure. The approach is using new technology to do ‘cold work’ – weldless connections, freeze plugs and forge bonding – in place of ‘hot work’, such as cutting and welding, where fire hazards and explosion are imminent risks. Without the creation of sparks or flames, cold work is significantly safer than hot work, which can lead to fires or explosions.

Innovator Industrial’s cold work technology allows clients to not only drastically improve safety, but also find radical efficiencies and cost savings. With the Innovator advantage, clients can make critical repairs to pipelines and tanks without shutting them down, which means repairs outside of scheduled turnarounds without a loss in production. The technology can also extend the life of infrastructure, reduce installation and repair times, and dramatically shave operation costs.

The company originally located in Edmonton but moved to Spruce Grove in October of 2020 in search of more space to match the momentum of its growth. The 9,600-square-foot facility on 2.6 acres in Spruce Grove serves as head office and base of operations for the company, which holds three other office locations, including Fort McMurray in Alberta and Sarnia and Hamilton in Ontario. ***“When we looked into locating in Spruce Grove, we quickly realized the benefits,”*** says Chris Coombs, General Manager of Innovator Industrial. ***“It’s a strategic move. We needed the land and space to grow, and we found it here.”***

While the company’s reach has extended throughout western and northern Canada, the current focus is clients in Alberta and Ontario. Advancements in the technology that Innovator Industrial provides continues to progress, as does their scope of projects and staff complement. With more than 30 staff across Canada, more are expected in the future.

“We received a strong welcome from the City of Spruce Grove, and they were very helpful in solving any issues we faced,” adds Chris. ***“It’s been a very positive experience moving here.”***





“We needed the land and space to grow, and we found it here.”

— Chris Coombs, General Manager of Innovator Industrial Services





“We like the quality of services in Spruce Grove in comparison to other industrial areas.”

– Jonathan Rozendaal, President of Rozen Steelworks





ROZEN STEELWORKS

rozensteelworks.com

From a modest beginning in 2010 with one employee in a single-bay shop, Rozen Steelworks has advanced as a forward-thinking company to over fifty employees and two locations in Spruce Grove totaling 53,000 square feet. A new two-storey office was recently constructed to accommodate the company's expansion. As experts in pipe spool and structural fabrication serving clients throughout Alberta and Western Canada, the company's philosophy is simple: to meet or exceed client expectations through continuous improvement and by getting the job done right the first time.

Rozen's rapid growth is a reflection of the resourceful nature of its leadership and the specialized niche it has developed. Dedicated research and development launched the company into the world of automation. ***"We developed much of our own equipment and automated it to suit our processes at a much lower cost compared to purchasing equipment from a third party,"*** says Jonathan Rozendaal, President and founder of the company. The R&D division continues to bring significant improvements and opportunities—automation has made fabrication 30-40% more efficient with the use of semiautomated welding heads and processes, allowing the company to minimize costs for their customers and break into big industrial markets. Optimization of the fabrication process has provided sustainably lower costs for Alberta's industrial markets.

While Rozen is known as the one-stop-shop for maintenance in plants of all sizes across Alberta and Western Canada, the company fulfills many construction needs, including a variety of industrial structures and equipment, machine parts, transmission pipelines, bridges and more.

Rozen Steelworks recently completed a \$20 million floating barge and walkway system for tailings ponds near Fort McMurray, Alberta. The barges, which consist of a massive pump, 38 floating walkways and an integrated electrical house in the center, are moored together with a modular floating docking system that can be assembled while floating.



This is new breakthrough equipment that will enable the bitumen producer to spin tailings at high speeds to separate water from sand, clay, and bitumen for re-use in bitumen extraction. This encourages faster settling and improves reclamation. Water is continuously recycled from tailing ponds back into the extraction process, reducing the use of fresh water from the Athabasca River and other sources. This process has greatly reduced the water consumption from oil production onsite, which has a direct benefit to the environment and water sustainability.

With its sustainable business model and streamlined costs, Rozen has adapted easily to fill market needs. ***"We saw products and services that companies were getting elsewhere and found a way to provide the same, with top quality and lower costs,"*** adds Jonathan.

More land has been purchased in Spruce Grove to provide for further expansion. ***"We have roots here. Our employees are happy to be in this area,"*** says Jonathan. ***"We like the quality of services in Spruce Grove in comparison to other industrial areas. The roadways and the amenities available right here support our business."***





“From the beginning, Spruce Grove was a perfect fit. It means a great deal to us to be part of this community.”

– Laura Jo Gunter, NAIT president and CEO



NORTHERN ALBERTA INSTITUTE OF TECHNOLOGY (NAIT) – Spruce Grove Campus

nait.ca

NAIT's Spruce Grove Campus represents an important and historic partnership to enhance post-secondary education and business development opportunities in Alberta. Since its opening in 2016, the 160-acre campus and innovative 12,600-square foot facility has allowed the polytechnic institute to expand its popular Crane and Hoisting Equipment Operator program to nearly double its former capacity, with the ability to accommodate over 500 apprentice students per year.

With seven cranes on site, the largest with an extension capability equivalent to a 16-storey building, the campus provides students with valuable hands-on learning. NAIT's Spruce Grove campus employs some of the world's most advanced technology and equipment, including cutting-edge classrooms and simulation labs to supplement on-site outdoor training. Its world-class facility has been instrumental in meeting the demand for boom truck and mobile crane operators in a wide variety of industries across Alberta and beyond, including construction, forestry, mining, and the oil and gas sector. Other NAIT programs, including the boilermaker, ironworker and steamfitter-pipefitter programs, also visit the campus to complete outcomes involving lifts and rigging, providing those students with additional relevant and real-world experiences.

"From the beginning, Spruce Grove was a perfect fit as the location for our new campus and a great partner in elevating the student experience," says Laura Jo Gunter, NAIT president and CEO. "Over the years, that partnership has become stronger and deeper. We've expanded our relationships with the city, the surrounding county, and with local industry. It means a great deal to us to be part of this community."

Additionally, NAIT's Industry Solutions provides on-site and virtual corporate training for organizations that require custom training programs to upskill employees. Companies leverage NAIT's expertise and resources to combine courses and programs that meet their specific training requirements.

Activities at the Spruce Grove campus have been transformative for NAIT, Spruce Grove, and Alberta, as well as creating opportunities to build on other programs related to the broader energy sector that are critical to the economy. As one of the largest apprenticeship trainers in Canada and a world-leading polytechnic, NAIT will continue to excel in delivering technology-based, hands-on training in partnership with industry to empower a highly skilled workforce into the future.





CROSS COUNTRY CANADA SUPPLIES & RENTALS

crosscountrycanada.ca

Cross Country Canada Supplies & Rentals (CCCSR) is a full industrial supply business offering equipment rentals, geosynthetics and supplies to a multitude of industries—everything from PPE and environmental protection supplies to dozers, compressors, and pipeline testing equipment. While the business caters largely to the pipeline industry, it serves a wide range of industrial and commercial clients across Canadian markets, including both large, diversified contractors and niche specialty contractors.

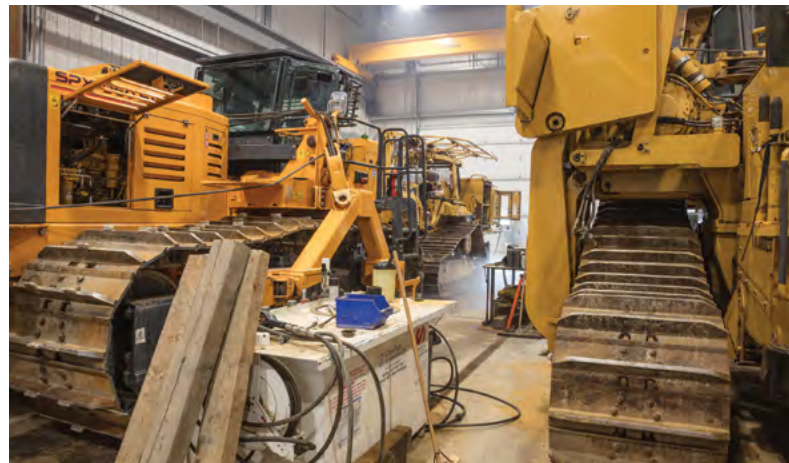
“We know and understand the businesses we serve because we’ve worked extensively in the field,” says Tim Martin, CEO. *“With our inside knowledge and experience in construction projects, we know what our customers need and how they work.”* Cross Country deliberately seeks out employees with a strong construction skill set and operates outside of the typical 9-5 business day, simply because their customers do. Delivering 24/7 assistance to their clients is a critical part of the company’s commitment to customer service, which has played a large role in their success.

The company began as Sideline Specialty Equipment Canada in 2014, with one employee in a garage. Its business model and growing customer base quickly garnered attention, and the business was purchased in 2015 by US company, Cross Country Infrastructure Services.

Headquartered on Saskatchewan Avenue here in Spruce Grove, their \$10 million development includes a 4,400 square foot office, 15,000 square foot warehouse, and 14,300 square foot maintenance and wash bay on an 11.6-acre lot.

“We chose Spruce Grove because it had the best real estate prices in the area compared to other industrial parks,” adds Tim. *“And logistically, everything is here – infrastructure, amenities and the transportation network to access our customers in all directions.”* While their original choice to locate in Spruce Grove was logistical, their choice to expand here was tied strongly to their staff and their commitment to the community.

In the fall of 2021, Tim Martin and his business partner Kade Demuth, along with a group of dedicated employees, acquired ownership of Cross Country Infrastructure Services here in Canada and rebranded as Cross Country Canada Supplies and Rentals, a 100% Canadian and employee owned company. *“We are eager to have gained autonomy in our ability to pivot and adapt our business to meet the ever-changing needs of the industry.”* says Tim, *“And to support our customers in their ongoing growth and success.”*





“We stayed in Spruce Grove because the City has the workforce talent required to provide our markets with everything they need.”

– Tim Martin, CEO





“The level of support among businesses and other organizations in Spruce Grove is something I don’t think you see that often and is quite special.”

– Glenn Fereday , Chief Operating Officer for Thompson Construction Group





THOMPSON CONSTRUCTION GROUP

thompsoncg.ca

Proud to be 100 percent Alberta owned and operated for more than half a century, Thompson Construction Group consists of six business units and four offices throughout Alberta and British Columbia. With its beginnings in 1964, the company put down roots in Spruce Grove in 1984, and now operates from a 30,000-square-foot head office with a 40,000-square-foot shop.

“One of the main advantages to being located in Spruce Grove is the sense of community and local support,” says Neil Matheson, Thompson Construction Group’s Chief Financial Officer. ***“The feeling of home and family orientated culture has allowed us to retain our most valuable asset: our people. Thompson Construction Group is proud to call Spruce Grove home.”***

Thompson Construction Group is renowned as an industry leader in a variety of light and heavy civil earth moving, highway, mining, and plant site construction projects across Western Canada. From engineering to procurement and construction, the company is dedicated to its relationships with suppliers, customers, and communities. Investment in their equipment and employees, approximately 1,400 during peak season, translates into more cost effective, timely and progressive projects.

The company’s leadership consistently takes bold steps toward innovation and self-sufficiency. The creation of an infrastructure division in 2016 brought a new focus to municipal infrastructure construction and land development in Edmonton and the surrounding area. Establishing an internal paint division in 2020 now allows the company to paint its own equipment – everything from dozers to haul trucks.

- » Non-residential and residential construction are well established and expanding sectors offering opportunities in areas such as heavy construction, modular and pre-fab housing, engineering and construction operation management.

“Our group has a very strong commitment to our customers, not just to managing projects and processes, but to ensuring that our equipment is of the highest quality,” adds Chris Mendez, Corporate Services Manager.

With better internal controls the company can minimize waste, tailor work to the needs of clients, and deliver faster, more efficient service at a lower cost. But the commitment doesn’t end there. From construction to community, Thompson Construction Group continuously provides generous support to a number of local organizations and events, such as the Tri Community Foundation, Kids Sport, Make a Wish Foundation, Stollery Children’s Hospital Foundation and the Spruce Grove Saints. ***“We’re lucky to be part of such a strong community,”*** says Glenn Fereday, Chief Operating Officer. ***“The level of support among businesses and other organizations in Spruce Grove is something I don’t think you see that often and is quite special.”***



“We are well supported by the City, we have great access where we are, and our staff are happy to live in Spruce Grove. It’s a diverse, growing, and vibrant community.”

– Toni Moretto, Director of Operations – Canada and Alaska,
WPI Canada Inc.





WPI CANADA INC.

wpi.com

Waukesha Pearce Industries (WPI), a pioneer in engine technology with nearly 100 years in business, has brought its legacy to Canada through a partnership that landed its Canadian head office in Spruce Grove. With seventeen US locations and three other locations in Canada – Nisku, Grande Prairie and Fort St. John – the Texas-born company is extending its reach across North America.

WPI's roots in Spruce Grove begin with Toni Moretto, who moved his oil and gas field equipment supply and maintenance company, Trittech Compression Inc., to Spruce Grove in 2005, where he invested in Canada's first natural gas engine test cell. In 2009 the highly specialized business was purchased by Hoerbiger Holding AG, a global player in compression, automation, and drive technology. When Hoerbiger shifted its operations in 2020, WPI took the opportunity to partner with Toni Moretto and expand WPI Canada.

Now Director of Operations for WPI Canada, Toni oversees work at the roughly 40,000 square-foot facility on 6 acres in Spruce Grove's Yellowhead Industrial Park. ***"WPI has approximately 60 employees in Canada, with 20 in Spruce Grove,"*** says Toni. ***"We expect that to rise to 40 in the near future."***

Touted as Canada's only one-stop-shop for everything natural gas engine-related, the company offers certified remanufacturing of natural gas engines and compressors, the world's largest inventory of Waukesha engine parts and Ariel compressor parts, and a vast inventory of zero-hour remanufactured engines for all major equipment lines, including Waukesha, Caterpillar, Cummins, White Superior and Arrow.

The facility boasts a full machine shop, 40-ton overhead crane, and Canada's only natural gas dynamometer, with capabilities of up to 4,000 horsepower and 4 to 24-hour diagnostic test run options. Dyno testing and tuning increases engine reliability and certifies that customer's engines will be free of defects. And the company's excellence in customer service doesn't end there – WPI also offers 24/7 emergency service, application engineering, product training, construction and energy solutions, and more.



As expansion continues in Canada with the recent opening of the Grande Prairie and Fort St. John, BC locations, the company is focusing on a new international initiative to grow into global markets. Active throughout the world as a leading service provider in all oil and gas production related equipment, WPI also supports mining and compression industries and power generation throughout North America and in Asia, South America, Africa and the Middle East. ***"We also see a lot of potential to partner with and support local business in the region. It just makes sense with our capacity to support the natural gas industry and heavy equipment repairs on the diesel engine side,"*** adds Toni. Spruce Grove is a central hub – for headquarters and management of both Canada and Alaska operations, and international operations as well.

Locating in Spruce Grove has been instrumental in the evolution of the business. ***"It's a great community,"*** Toni states. ***"We are well supported by the City, we have great access where we are, and our staff are happy to live in Spruce Grove. It's a diverse, growing, and vibrant community."***





NORANCO TRANSPORT LTD.

norancotransport.com

- » Located 11 kilometres (7 miles) west of Edmonton, Spruce Grove holds a prominent position within the Edmonton Metropolitan Region – a robust hub of 1.3 million people and one of the most productive and prosperous area in the province.
- » Strategically situated between the TransCanada Yellowhead Highway and Highway 16A, Spruce Grove is the service and supply centre for a growing trade area of 138,000 people.

Whether it's a single B-train load of construction supplies or a hundred loads of crates destined for Tuktoyaktuk, NWT, Noranco Transport is well-known for providing high-quality, customizable transportation and logistics services. The company, which moved operations to Spruce Grove in 1992, has been a preferred hauler in the construction, oilfield, and oversize transportation industry in Western and Northern Canada, Ontario, and Alaska for 35 years.

"Bringing the business to Spruce Grove in the early 1990s was the best move I ever made. We needed a bigger yard and a larger shop. We haven't looked back," says owner, Norm Austin.

"Being in Spruce Grove saves us time in so many ways – there isn't the city traffic to deal with and access to the major highways is crucial for us. We also deal local as much as possible and today much more is available here. But when parts or supplies are needed from Edmonton, we are close enough that companies will deliver. It's all here, everything we need. Spruce Grove is home."

On six acres in the Spruce Grove Business Park, Noranco Transport now has 12 trucks and four lease operators, ready to move just about anything, anywhere. Diversifying its capabilities and the services it offers has been instrumental in Noranco Transport's success in becoming a leader in the oil, gas, B-train, and oversize transportation industry.





“It’s all here, everything we need.”

– Norm Austin, Owner of Noranco Transport





'The Bee Maid Story - From Hive to Home'
ON SALE NOW in the Bee Maid gift shop -
70 Alberta Ave., Spruce Grove





BEE MAID HONEY

beemaid.com

The Alberta Honey Producer's Cooperative has been around for more than six decades and has had a large presence in Spruce Grove since it moved from Edmonton to its modern packing facility built in 1993. The 72,000-square-foot plant, located at the heart of Spruce Grove's Diamond Industrial Park, employs around 40 people and processes seven to eight million pounds of quality honey each year.

The company's unique business model has proven very successful. The Manitoba, Saskatchewan, and Alberta Honey Producer Cooperatives collaborate to process, market and ship Bee Maid's variety of liquid and creamed honey products worldwide. Members of the cooperatives are the actual beekeepers who raise the colonies and are also the co-owners of the Bee Maid brand – a strategy that has given beekeepers an advantage they may not have had otherwise.

Bee Maid Honey is proudly 100% Canadian and is the only honey producer in the country that sources all of its honey from its owners. Not only is the honey processed in Spruce Grove, but it is also packaged in plastic bottles, made right at the plant. Operations at the Spruce Grove facility have been instrumental in positioning the company as one of Canada's largest honey distributors.



- » 100% of Bee Maid Honey is pure Canadian honey
- » The Prairie Provinces produce, on average, 80% of Canadian honey
- » Honeybees are vital for pollination and can increase crop production by up to 8 times
- » Canadian honey is sold in 15 countries around the world
- » Together, Bee Maid's more than 300 members employ over 2,000 people
- » The estimated economic impact of honeybee pollination is Canada is over \$1 billion

“Bee Maid means quality. Period. It’s a good outfit and its 100% Canadian. Everyone else uses Bee Maid as a benchmark for their honey.”

– Otto Boettcher, Bee Maid Beekeeper



SELJAX

seljax.com

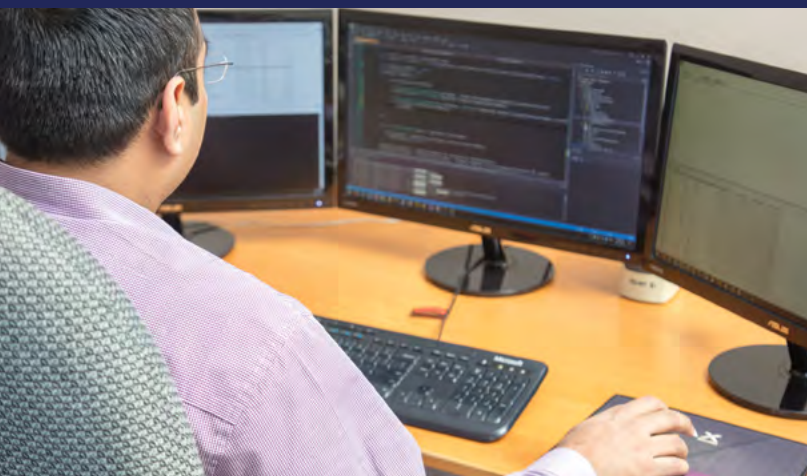
Seljax supplies the world's most advanced retail estimating and 3D design software used by the building materials industry. Top-quality software tools designed for lumber retailers, suppliers, contractors, and DIY and home builders increase efficiency and simplify cost analysis when improving or constructing homes and a variety of other buildings and structures, such as decks, garages and stud and post frame buildings.

Seljax is the largest software company of its kind and has adapted proactively to the technology revolution and how it has changed the way our world thinks and acts. With more than 25 years in business, the company continues to refine its technology, add 3D programs, and enhance customer service benefits, such as bilingual service and internal software messaging that alerts Seljax to call their customers even before they realize they have a problem.

Selecting Spruce Grove as a base for the company's head office came easily. ***"Locating in Spruce Grove gives us all the advantages of the Edmonton Metropolitan Region. This is a young, vibrant community with a very positive environment – always moving, not sitting still,"*** says Braven Blackwell, President of Seljax.

The City has provided everything Braven needs for his business and family life. ***"We like the smaller scale, the quality of life here. In Spruce Grove we have everything in the way of retail businesses, excellent schools, and first-class sport facilities all right here. It's wonderful."***

With their extensive expertise, Seljax is serving over 2,500 customers and helping over 6,000 estimators every day across North America. The company has evolved to an innovative design company with 20 employees in a 5,000 square foot office located in the Triton Business Centre, adding to Spruce Grove's thriving downtown core.





“In Spruce Grove we have everything in the way of retail businesses, excellent schools and first-class sport facilities all right here. It’s wonderful.”

– Braven Blackwell, President of Seljax





READY ENGINEERING

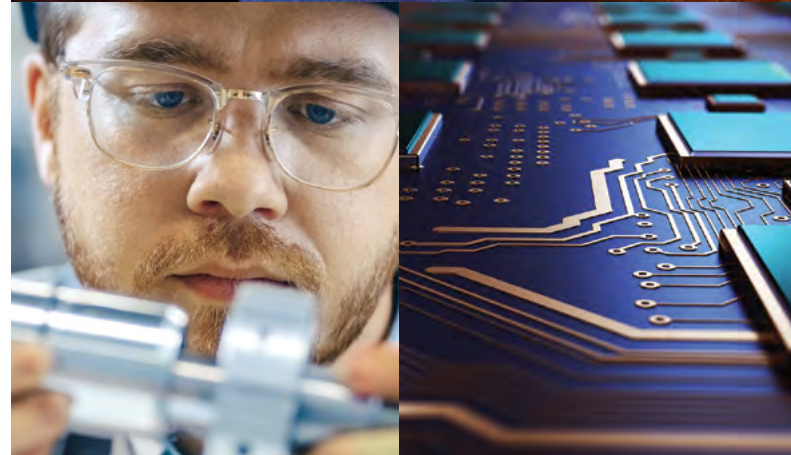
readyengineering.com

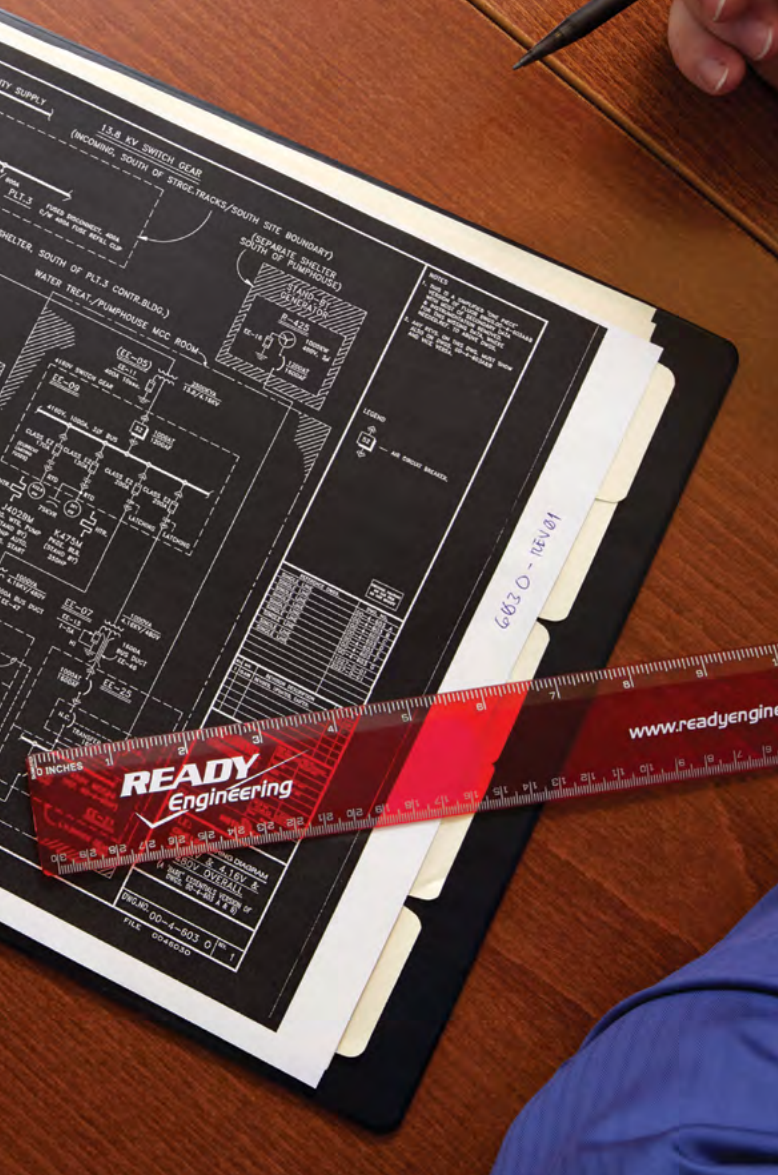
Lee and Susan Ready launched their Spruce Grove engineering firm in 1996 with three employees, a single client, and 750 square feet of office space. Now with 45 employees and offices across Western Canada and the United States, Ready Engineering is on the ground on six continents, providing worldwide support for their customers.

Their Spruce Grove location had what was necessary to support their booming success, including a steady supply of local staff from NAIT and University of Alberta programs, close proximity to Alberta's capital, and big city amenities. ***"Spruce Grove has what Ready Engineering needs for the future development of our business,"*** says Lee Ready, President of Ready Engineering. ***"As a family and a business, we are not interested in living in a big city, but we want all the amenities that go with big city living. Spruce Grove and the neighbouring areas offer all we need for our business and our family life."***

"Spruce Grove also offers better rates for office space than we would find in Edmonton," adds Jordie Holton, Manager of Electrical Engineering. ***"We have expanded within our facility and have more room to grow."*** That growth is evident as the company develops relationships within a growing number of industries. The company assists clients in biofuels, agri-food, chemicals and fibers, mining, oil and gas, pulp and paper, special waste management, and nuclear, fossil, and green power generation.

Advancing into emerging markets is key for the company, and niche consulting is what sets it apart. Cryptocurrency is the newest field where Ready Engineering is making its mark and adding value, by supporting clients with engineering design, energy and heat dissipation, and sourcing green energy to minimize environmental impact.





Regardless of industry, Ready Engineering expertly addresses customer's concerns related to power system designs, control system installations and upgrades, software verification and validation, and design, commissioning, and start-up support. Its unique and exceptional level of service has garnered an impressive collection of awards – the company has received the PSMJ Circle of Excellence Award seven times and the PSMJ Platinum Award as well, all of which demonstrate its position as one of the best run engineering firms in North America. Other awards include Consulting Engineers of Alberta Showcase Award of Excellence for both Software and International projects, Alberta CIBC Small Business Award of Distinction, and Business of the Year from the Spruce Grove Chamber of Commerce.



“Spruce Grove and the neighbouring areas offer all we need for our business and our family life.”

– Lee Ready, President of Ready Engineering



“Spruce Grove is a desirable community and everything that people need is here. We’re excited for a strong future in this city.”

– John McAffray, President of Alquinn Homes



ALQUINN HOMES

alquinnhomes.com

Alquinn Homes exemplifies vision and innovation within the home building industry with its unique approach that focuses on excellence in construction and complete customization for homeowners. By finding efficiencies in time and construction, the company's build time is one-third that of traditional home builders, allowing Alquinn to offer their customers a guaranteed possession date, which is very rare.

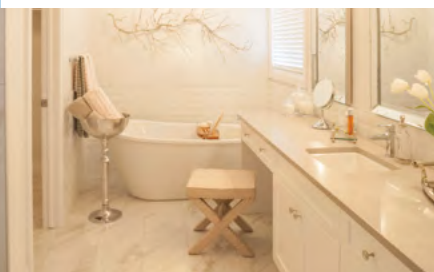
"Our mission when we started in 2011 was to build a better life –for our customers, our tradespeople and staff, our community and our family," says John McCaffray, President of Alquinn Homes. ***"We strive to build spaces our customers will love to live in, and we encourage our staff to engage in the community and pursue things they're passionate about."*** Their business approach was met with overwhelming response – the team set out to build 10 homes in the first year and instead met the demand for 40. They were up to 160 homes within four years in Spruce Grove, Stony Plain, Edmonton, Fort Saskatchewan, Morinville, Devon, Leduc and Sturgeon County.

"The key for us is to always remember we are building their home and not our house," adds John. ***"We don't offer design palettes; our customers customize what they want. That's very critical. We are in the business of creating spaces for people to create lifetime experiences and memories".*** Alquinn's stunning new 3,200 square foot facility in Spruce Grove showcases various customizable options and gives their customers the incomparable experience of customizing their home with support from a design consultant. Each home even comes standard with solar panels, the result of a valuable partnership with Solaré Canada, also in Spruce Grove.



While Alquinn is very proud of the experience it offers its customers, the company measures its true success by how it gives back to the community. Alquinn nurtures a very strong culture of giving; its team of 30 employees recognizes the importance of helping child and teen mental health services in the region. Alquinn works throughout the year with organizations such as CASA and Ronald McDonald House.

"Our community is important to us," explains John. ***"Our families and our business have strong roots here. Our customers want to live here. Spruce Grove is a desirable community and everything that people need is here. We're excited for a strong future in this city."***



**Alquinn Homes**



**“ Everything we need
is here in Spruce Grove.”**

– Darrell Demers, Owner of Lea-Der Coatings





LEA-DER COATINGS

lea-der.com

Known throughout the world for its safety and environmental protection products for the oil and gas industry, Lea-Der Coatings made its start in Spruce Grove in 1994. A year after the company went global in 2006 with Lea-Der International, Darrell Demers, a long-time employee, purchased it and continued to build on its success. Now distributors in the US, Middle East, Mexico, Europe, Russia, Asia, and North Africa market an array of products that contribute to human safety, environmental protection, water filtration, noise reduction and more.

The company has made great strides in not only expanding globally, but also diversifying – Lea-Der Medical Services, an entirely new division, was incorporated in 2020. The division offers many new products related to the medical field and provides onsite drug and alcohol testing. Timing was right to allow the company to contribute to human and community safety with the rise of COVID-19, by distributing specialized sanitizing wipes and air filtration systems that help prevent the spread of the virus. Collaboration with several other companies and Global Affairs Canada is underway to bring Lea-Der Medical Services to the global stage as well.

When it came time for expansion, Darrell chose to stay in Spruce Grove, keeping Lea-Der's 12 employees in the new 10,000-square-foot state-of-the-art manufacturing facility in the Spruce Grove Industrial Park. ***"Everything we need is here in Spruce Grove,"*** says Darrell. ***"The location is central to the domestic drilling market, we have support from the Mayor and Council, and the city is very family oriented to support our staff."***

While the company is best known for their drill floor traction matting, which is used in a wide variety of applications, they are always interested in new opportunities to serve customers in heavy industry and other sectors. Lea-Der is partnering with Northern Oil Research Technologies to upgrade bitumen at a low temperature, a process that creates less greenhouse gases in the process. The innovative technology has been patented to distribute to major oil company providers and produce a positive impact for the environment.



Looking toward the future, Lea-Der is always progressing. ***"We've been very fortunate in that our greatest strength is achieving our goals. We've met and exceeded them through the dedication and abilities of our employees."***





CARGILL PROTEIN

cargill.ca

Cargill provides food, agriculture, financial and industrial products and services to the world. Together with farmers, customers, governments and communities, the company helps people thrive by applying valuable insights and over 150 years of experience. Its 155,000 employees across 70 countries are committed to feeding the world in a safe, responsible, sustainable way and improving the communities where they live and work.

Supporting local communities is an essential part of Cargill's commitment to being a responsible corporate citizen. Their facility in Spruce Grove provides support for local charitable and civic organizations and programs, such as food relief agencies, school and youth programs, and local environmental projects through their Cares Committee.

The Spruce Grove facility, located in the Shep Industrial Park, processes more than 65 million pounds of beef annually to supply the food service industry across Canada. Their highly engaged team of more than 100 individuals is committed to safely and efficiently producing a high-quality product each and every day for their customers.

"There is a friendly work environment in this city related to doing business and finding skilled employees," says Robert Smith, Plant General Manager. "Our Spruce Grove location gives us a direct route to highways and good access to rail service."

Cargill Limited, the Canadian division of Cargill, has been recognized as one of Canada's Top 100 Employers. The award recognizes companies that make significant investments in their employees and create atmospheres that encourage highly engaged and productive workforces.



“There is a friendly work environment in this city related to doing business and finding the right employees.”

– Robert Smith, Plant General Manager, Cargill Value Added Meats



Cargill is proud to be recognized as one of Canada's Top 100 Employers.





“The local chamber of commerce has been very supportive and instrumental in creating opportunities to network and prosper.”

– Rik Kaminsky, Founder and President of Solaré Canada Inc.





SOLARÉ CANADA INC.

solarecanada.com

Established in 2013, Solaré Canada Inc. is an award-winning Certified Aboriginal Business that specializes in high-quality solar and LED lighting solutions for municipal, industrial, commercial, and residential clients. Through solar consulting and energy auditing and mentorship, as well as specialized engineering functions around energy consumption, Solaré has helped clients achieve significant savings on energy costs.

With a rare resourcefulness and dynamic vision, the company's team of eight employees and various subcontractors develop energy systems and community energy plans with a unique three-pronged approach that emphasizes its holistic and sustainable view of energy. ***"First we need a clear understanding of energy consumption,"*** explains Rik Kaminsky, Founder and President. ***"Second, we find ways to reduce that consumption, and only then do we look at the third aspect, which is the production of new energy sources. It all comes full circle and is about respecting what we use."***

Solaré Canada's recent focus is a partnership with Alberta Infrastructure, a large-scale school modernization program that will install solar energy systems on schools across the province. One project with the Calgary Board of Education will see installations on six schools in the Greater Calgary Region for a total of 920 kW.

Integrating renewable energy into Alberta's energy landscape is a passion for Solaré, and the business exemplifies successful energy transition in the province. Born from a company transitioning from oil and gas, Solaré has taken a foothold in this bold new industry, creating jobs, reducing customer's energy costs, and cutting greenhouse gas emissions. The company's expert and evolving team is setting an example of what it is to be a forward-thinking and responsible corporate neighbour.

"It's very important to us to be strong and responsible social partners to the communities we work with," adds Rik. These partnerships are fundamental to the business, and Solaré initiates community engagement and investment wherever it can, an attribute that has been foundational in the company's ability to build resilience.

Solaré plans to continue to diversify and build on its current success in Spruce Grove. ***"The City has the space we need – store frontage with lots of traffic and warehouse space,"*** says Rik. ***"The local chamber of commerce has been very supportive and instrumental in creating opportunities to network and prosper, and the community has been good to us. We feel like we can be regional citizens here."***



CONTACT US TODAY

ECONOMIC AND BUSINESS DEVELOPMENT

investsprucegrove.ca

780-962-7608



City of Spruce Grove
315 Jespersen Avenue
Spruce Grove, Alberta T7X 3E8

